

EVALUATION OF CLIMATE CHANGE SCENARIOS BASED ON AQUATIC FOOD WEB MODELLING

Cs. VADADI-FÜLÖP^{1*} – L. HUFNAGEL² – Cs. SIPKAY² – Cs. VERASZTÓ¹

¹*Department of Systematic Zoology and Ecology, Eötvös Loránd University,
H-1117 Budapest, Pázmány P. sétány 1/c, Hungary*

²*Department of Mathematics and Informatics, Corvinus University of Budapest,
H-1118 Budapest, Villányi út 29-33, Hungary
(phone: +36-1-372-6261; fax: +36-1-466-9273)*

**e-mail: vadfulcsab@gmail.com*

(Received 30th September 2007; accepted 15th November 2007)

Abstract. In the years 2004 and 2005 we collected samples of phytoplankton, zooplankton and macroinvertebrates in an artificial small pond in Budapest. We set up a simulation model predicting the abundance of the cyclopoids, *Eudiaptomus zachariasii* and *Ischnura pumilio* by considering only temperature as it affects the abundance of population of the previous day. Phytoplankton abundance was simulated by considering not only temperature, but the abundance of the three mentioned groups. This discrete-deterministic model could generate similar patterns like the observed one and testing it on historical data was successful. However, because the model was overpredicting the abundances of *Ischnura pumilio* and Cyclopoida at the end of the year, these results were not considered. Running the model with the data series of climate change scenarios, we had an opportunity to predict the individual numbers for the period around 2050. If the model is run with the data series of the two scenarios UKHI and UKLO, which predict drastic global warming, then we can observe a decrease in abundance and shift in the date of the maximum abundance occurring (excluding *Ischnura pumilio*, where the maximum abundance increases and it occurs later), whereas under unchanged climatic conditions (BASE scenario) the change in abundance is negligible. According to the scenarios GFDL 2535, GFDL 5564 and UKTR, a transition could be noticed.

Keywords: *hydrobiology, community, ecosystem, climate change*

Introduction and aims

The concept of seasonal dynamics is published in several forms. It has been come out like „seasonal variation”, „seasonal changes” or „seasonal cycle” considering changes in the abundance, biomass or in the composition of assemblage. From our point of view, seasonal dynamics is temporal change in the examined assemblage, which is regulated by the climate, primarily by the temperature. It has been shown that abundance and structure of the zooplankton community display considerable variations on seasonal, interannual, and regional scales (Arashkevich et al., 2002). Predictable patterns of biodiversity often occur in freshwater pelagic communities over yearly cycles in temperate regions of the globe (Bernot et al., 2004).

Zooplankton is a crucial component of aquatic ecosystems because of its role in the trophic chain. It represents the channel of transmission of the energy flux from the primary producers to the top consumers (Abrantes and Goncalves, 2003). Many species of zooplankton serve as feed for fishes, moreover they could be keystone species. Copepoda is one of the most important groups of freshwater zooplankton and is one of the most numerous animal groups on the earth, occurring in all types of freshwater bodies. The phytoplankton as primary producers make it possible to operate the aquatic ecosystem in that way, they accept the solar energy and serve as feed.

Our main aims were the following:

- Description of the phytoplankton, zooplankton and macroinvertebrate assemblages in the examined pond.
- Working out and adopting a sampling method regularly carried out, that provides accurate data of the temporal change of the examined objects.
- Elaborate a simple simulation model, which is able to generate similar patterns to the observed ones. Testing the model.
- Running the model with the data series of different internationally recognized climate change scenarios, supplying and interpreting of the predictions. Comparative estimating of the alternative climate change scenarios with classical statistical methods.

We chose an artificial and small pond to examine, as we thought it is simpler and more closed than natural freshwaters, and the operation of the system could be easier understood. We expected the model to indicate real patterns like the observed data series, thus the climate change scenarios could be valued. By means of a simple simulation model we were able to generate similar patterns like the observed one. Running the model with the data series of different climate change scenarios, we got a prospective notion of the abundance of the examined objects, which must be handled watchful. The aim of the process is not the prediction, but the comparative appreciation of the possible effects of the different, international climate change scenarios, with the aid of a real model situation.

Review of literature

Climate change, climate change scenarios

Climate change is considered, when the fluctuation range of climatic elements shifts appreciably to the higher or lower values, and this state remains for a long period (Varga-Haszonits, 2003). General Circulation Models (GCM) were developed at first to modelling the atmosphere's processes. Later also the atmosphere's interactions with biosphere, hydrosphere, lithosphere and cryosphere were taken into consideration, and these models were accounted as Global Climate Models (GCM). These models use 3D space, tracking horizontal and vertical movements and cover the surface with grid (Varga-Haszonits, 2003). Two types of GCM are distinguished: equilibrium and transient models. The equilibrium model calculates with doubled level of carbon-dioxid in the atmosphere. The model is run till then it set in an equilibrium state, namely a state when it evolves a stable temperature on the surface. By gradually increasing level of carbon-dioxid, transient models make it possible to determine the gradually changing climatic conditions (Varga-Haszonits, 2003). The claim to apply GCM for regional levels demands using the method of downscaling. The kernel of downscaling is considering the results of GCM's for great areas, and setting statistical correspondence between the climatic variables of great and minor areas (Varga-Haszonits, 2003).

Climate change scenario can be defined as a likely combination of the change of climatic conditions, which is able to use for testing the possible effects and asses the reactions for them (Varga-Haszonits, 2003). These models are based on the simulations of General Circulation Models and regional climate models. Some remarkable institutes for developing GCMs are the undermentioned: the Geophysical Fluid Dynamics Laboratory (GFDL), the Goddard Institute for Space Studies (GISS), the National

Center for Atmospheric Research (NCAR) and the United Kingdom Meteorological Office (UKMO). Scenarios are doubtful, so it is rewarding and also common to use alternative scenarios in the studies. Scenarios do not give factual forecasts, rather make hypothetical prospects. Leastwise they are useful for biophysical and socioeconomic systems, by giving the trend and amplitude of changes and giving the threshold of processes that are sensible for climate (Varga-Haszonits, 2003).

The scientific results concerning climate change are summarized in IPCC (Intergovernmental Panel of Climate Change) reports. Hungary takes part in this program too. For the sake of global warming and climate change VAHAVA project was started in Hungary. Its primary aims were to get ready for the negative or positive effects of global climate change, prevention of loss, mitigation of damage and forwarding of restoration (Láng et al., 2006).

Seasonal dynamics of zooplankton

In Hungary Lake Balaton is one of the most investigated freshwaters. The Balaton Limnological Research Institute has been monitoring the qualitative and quantitative change of zooplankton in Lake Balaton for a long time. Based on its data series, the abundance of Crustacean plankton increased until 1951, then decreased gradually until 1965 (it was the year when a lot of fish perished), just in the late sixties was observed moderate rising in abundance. Eudiaptomus gracilis came out at 25-50% of total Crustacean plankton in Lake Balaton in 1996-1997 (Zánkai and Ponyi, 1997). The quantitative changes of Eudiaptomus gracilis were described by Ponyi, Horváth and Zánkai (1975). There is a great difference, both quantitatively and qualitatively, between the samples collected in July and in September: the abundance of copepods increases in September, whereas the abundance of cladocerans decreases (Ponyi and Tamás, 1964). Ponyi et al. (1974) examined a fishpond near by Lake Balaton and they found maximum biomass in early summer and it decreased in July. Only in June was the biomass of Cladocera significant, in July it was less and then this group disappeared. In early summer copepod biomass was less than cladocerans biomass, but copepods remain with high abundance after disappearing of Cladocera.

Seasonal and daily patterns of zooplankton populations are often predictable in natural lakes (Bernot et al., 2004). According to Wu and Culver (1994), food and predation were the two main factors regulating Daphnia population dynamics. Mouny and Dauvin (2002) studied the dynamics of mesozooplankton in the Seine estuary. The marine species showed maximum abundance at the end of spring, while freshwater species peaked in summer correlated with the maximum water temperature. One copepod species dominated the zooplankton throughout the year. In Sommer's opinion (1989) seasonal succession of planctonic communities is driven by the changing availability of limiting resources to phytoplankton and zooplankton populations. In zooplankton seasonal succession, communities of a few large species give way to communities of smaller, more diverse s in late spring or early summer (Sommer, 1989; Caceres, 1998). Simona et al. (1999) did not find seasonal succession in a mountain lake in the Alps. From the article written by Ferrara, Vagaggini and Margaritora (2002) we are able to form a notion of zooplankton, dominated by an Eudiaptomus species, where cladocerans peaked in summer and in autumn.

Previous references were concerned freshwaters, however most publications which we have found, deal with seas. Landry et al. (2001) found statistically significant seasonal signals, with peak biomass and abundance during the summer months for the

mesozooplankton community at Station ALOHA on the Pacific Ocean. There may have been an increase of about a factor of two in zooplankton standing stocks over the past two decades and the authors presume, that nitrogen fixation could provide the source of new nutrients to support higher productivity, larger phytoplankton, and enhanced zooplankton standing stocks in the summer, when the upper water column is most stratified and isolated from nutrient influxes from below. Arashkevich et al. (2002) did not find considerable changes in zooplankton biomass between seasons in the Barents Sea. There is a seasonal succession in San Francisco Bay, involving the replacement of a cold-season species by a warm-season species, and the zooplankton abundance appear to be constant among years (Ambler et al., 1985). The seasonal dynamics was discussed in relation to temperature, coastal hydrography and the seasonal cycles of phytoplankton. Christou (1998) examined the abundance of copepods in a Mediterranean coastal area (Aegean Sea) during five years. Copepod abundances and environmental parameters, almost all, exhibited pronounced annual cycles, and most copepods revealed repeated patterns and considerable interannual variability. Temperature and salinity were the most significant environmental parameters accounting for the variability of abundances. According to Ikauniece (2001) the abundance of coastal mesozooplankton species in the Gulf of Riga is determined by the combination of hydrological regime, predation pressure, benthic conditions and the success of living strategy. Kovalev et al. (2003) summarized the zooplankton seasonal dynamics of the Mediterranean, the Black and the Azov seas, based on their own data and data from literature. In the deep water central regions of the seas, the seasonal cycle of zooplankton abundance is characterized by one maximum occurring in spring or summer. In the coastal regions, two or three peaks (spring, summer and autumn) exist. The amplitude of seasonal fluctuations increases from the Mediterranean to the Black and Azov seas, as well as from South to North in each sea. The results of Dippner, Kornilovs and Sidrevics (2000) suggest that in the Central Baltic Sea the interannual variability during spring of zooplankton species is controlled by the sea surface temperature during spring (significant correlation was found only in spring). A possible explanation for it is the top-down control by fishes (smaller feeding activity in spring). Chiba and Saino (2003) examined the effect of El Niño events on the zooplankton community in the Japan Sea. They observed a clear seasonal succession in community structure from a cold-water copepod-dominated community in winter and spring to a gelatinous, carnivorous and warm-water copepod-dominated community in summer and autumn. The spring community structure varied considerably between years. Iguchi (2004) collected the knowledge of Japan Sea concerning zooplankton in his review he also presented results about seasonal dynamics. Temporal variations in zooplankton biomass showed both seasonal and year-to-year components, maximum abundances occurred in spring. As for long-term changes, 3-6 year cycles were identified, with the dynamics of the surface warm Tsushima Current and the subsurface cold water. Dolganova and Zuenko (2004) found no significant inter-decadal variation, but inter-annual variation was considerable and generally opposite to water temperature changes in the upper layer of the Japan Sea. The pattern of zooplankton productivity is changing over time in the subarctic Pacific, probably in response to interdecadal ocean climate variability (Mackas and Tsuda, 1999). These changes include 2-3 fold shifts in total biomass, 30-60 day shifts in seasonal timing, and 10-25% changes in average body length.

Publications concerning specifically modelling were not available in force. Generally complex approaches are typical: considering predators, food, environmental parameters jointly. We did not find any articles dealing with the modelling with climate change scenarios in the literature of zooplankton. Angelini and Petrere (2000) set a model to describe the plankton system of the Broa reservoir. The three state variables of the model were: phytoplankton, zooplankton and the fish *Astyanax fasciatus*. The forcing variables were: temperature, nitrate, phosphorus and solar radiation. According to their results, temperature was the most important variable in the system. Broekhuizen et al. (1995) dealt with the modelling the dynamics of the North Sea's mesozooplankton. Among the parameters there were nutrients, detritus, carnivorous and omnivorous mesozooplankton, microzooplankton, flagellates and diatoms.

Seasonal dynamics of macroinvertebrates

There are many references in the literature that the quality and quantity of submerged and emerged macrophytes may play an important role in the spatial and quantitative patterns and the combination of species of the macroinvertebrate fauna (Müller et al., 2001), thus the relevance of examining macrophyte is indisputable.

Müller et al. researched parts of Lake Tisza with narrowleaf cattail and other aquatic plants (Müller et al., 2001). According to their results areas with narrowleaf cattail stands contained the most species and this area also proved to be the richest from the aspect of spiders, insects and mayflies.

Nicolet et al. researched wetland plants, macroinvertebrates and the water's physico-chemical characteristics of 71 temporary ponds in England and Wales (Nicolet et al., 2004). Their work primarily directs attention to the importance of temporary ponds from the point of view of nature conservation.

Parson and Matthews' work (1995) emphasizes the relation between the macroinvertebrates and the macrophytes, pointing out that this is an insufficiently researched subject in water systems. The authors examined the invertebrate macrofauna of emergent macrophytes and submerged macrophytes in a small, shallow, eutrophic pond in the USA.

The scientific knowledge accumulated over the years made Lake Balaton one of the most thoroughly researched shallow lakes in the world. However earlier works are characterized by the fact that they neglected seasonal dynamics (Sipkay, Hufnagel and Gaál, 2005). In recent years Muskó et al. (2004) took quantitative samples of macroinvertebrates for three years in the submerged macrophyte stands of the north shore of Lake Balaton using the sampling method and device described by Bíró and Gulyás. During this research seasonal dynamics were also studied. During a year they took samples on a total of three (May-June, July and October) occasions and in another year they took samples on four occasions (May, July, September and October). Because of the methodology they used, their results are comparable with data gathered in much earlier years.

In the scientific literature there are references to the seasonal changes of certain groups that make up the invertebrate macrofauna of Lake Balaton. Seasonal dynamics of certain groups of Balaton invertebrates on offshore bars have also been investigated by Dózsa-Farkas et al. (1999). Data about the seasonal fluctuation of certain invertebrates living in settlings and being a part of the fish nutrition were provided by Szító (1998).

In their previous work, Sipkay and Hufnagel (2006) attempted to model the seasonal changes of *Limnomyxa benedeni*. The model generated simulated data based on the daily mean temperature and the water level as inputs. They used the same method for optimizing the parameters. Our model is based on this work partly.

Phytoplankton succession

The research of phytoplankton has begun in the 19th century, accordingly a lot of calculable information has been gathered during this period, though exploring a lake requires years of work. Using the reverse microscope developed by Utermöhl (1958) surveys of phytoplankton has been boomed. The first time series' were described in the 40-s and 50-s, but detailed surveys concerning zooplankton and water chemical variables, were just reported in the 60-s (for instance Nauwerck 1963). During this period the phytoplankton succession has become a pregnant phenomenon among hydrobiological surveys. Therefore many remarkable works have been conducted by now, but interpreting and associating these works is complicated. It is not surprising, that the first model dealing with the plankton succession (the so-called PEG-model [Plancton Ecological Group]) was sketched just to 1986, as a result of the synthesis of many case studies (Sommer et al., 1986). The applicability of this model revealed, that many types of lakes should be distinguished in the aspect of plankton, as the PEG-model is adapted only for modelling the plankton succession of the temperate, deep lakes. It is crucial to note, that in Hungary there is no natural stratified deep lake, therefore there is no general model for it.

In shallow lakes it can not evolve temperal and water chemical stratification, even so it does not exceed the secondary water chemical stratification of epilimnion, occurring in natural deep lakes.

At first in the 60-s it was recognized, that hypertrophication is traceable by determining the biomass and production of phytoplankton. Vollenweider (Vollenweider 1968; Vollenweider & Kerekes, 1982) was the first who said that the reason for eutrophication is the increasing quantum of nutrients (principally phosphorus). Researchers working in 70-s, like Somlyódi et al. (1983), handled phytoplankton as one variable, and tried to explore the background functions, though phytoplankton does not exist, it consists of many species evolved in different ways and are grouped in the way of community dynamics.

Such complex models set up in the 60-s, were followed simpler models (Jørgensen, 1994). The community approach were not detailed enough, parametrization was set back by differentiating only seven functional groups (Jørgensen & Padisák, 1996).

Tilman (1982; Tilman et al., 1982) showed a new way labouring his source-allocation models, where certain population dynamics changes were able to interpret. Namely if we want to defend against algal bloom, we should know the main community dynamics except the autecological parameters of the given species.

According to the competitive exclusion principle, succession leads to the climax state with low diversity (Hardin 1960). Therefore it can be said, that in the temperate regions the equilibrium state is characterized by the dominance of 1-3 species, because phytoplankton is limited in this regions only by 1-3 source together (phosphorus, nitrogen, silicon, light). However, much more species occurs in the phytoplankton community together. This is the so-called paradox of plankton, formulated first by Hutchinson (1961). Hutchinson surmised that the solution is changing the boundary

conditions, but it was first described by Richerson et al. (1970) as „contemporaneous disequilibrium”.

Connell (1978) supposed that the competitive excluding principle is not effective (if it exist). Communities with a lot of species never get to the climax state with low species richness, because of the disturbances. This presumption was formulated as the Intermediate Disturbance Hypothesis (IDH).

It should be mentioned the comparative works in the last decades, which tried to contrast models set up for phytoplankton with models set up for terrestrial communities. After many works an approach was stood out, that a minor break in the weather, which is negligible for the offshore vegetation, can be up to a climate change for phytoplankton (Sommer et al. 1993).

Elton (1927) has already pointed out that terrestrial and aquatic communities should function uniformly. In this wise there is a parallelism with models worked out for terrestrial systems. Nevertheless Cohen (1994) pointed the inverse trait of this comparison. As long as we examine phytoplankton among its own spatial and temporal traits, then the survival, growth, community organization and successional evolution of the species answer all the criteria (Padisák, 1985).

In Hungary Lake Balaton is the centre of limnological research. According to Padisák (1985) the nutrient proportion and secondary stratification (during the long calm periods) are followed by the structural changes of phytoplankton. During calm periods between storms, diversity increases initially, then decreases. This means that after stirring small phytoplankton (<10 µm) occur, and 4-5 days later larger phytoplankton (> 10 µm) are multiplying.

DIVDROP method (Rajczy & Padisák, 1983) was used to determine the dominant species during algal blooms and also other cases (for instance: 1976-78 *Aphanizomenon flos-aquae*, after 1980 *Cylindrospermopsis raciborskii*). However species becoming dominant can not be predicted (Kalff & Knoechel, 1978).

The phytoplankton succession in Lake Balaton, in summer is operating according to the IDH. The diversity has maximum by medium frequency of disturbance, whereas by high or low frequency diversity is low (Padisák, 1993).

Vörös and Kis (1985) applied the Reynolds-periodicity (Reynolds, 1980, 1982) in their case study in Lake Balaton; the definition of succession is practicable only for terrestrial vegetation according to the authors. To start-up they used Margalef's concept for succession (Margalef, 1960), which is supported by several studies performed on seas (Guillard & Kilham, 1977). The phases of Margalef's succession are the following:

- Abundance is high, mainly the species with weak buoyancy and small size are dominant, however the nutrient concentration is outside.
- Appearing species with medium and large size, total abundance is decreasing, the quantum of nutrient is decreasing.
- Spreading and dominating species with large size, moderate developing and good buoyancy. These species are often toxic (Margalef, 1960). The nutrient concentration is minimal.

Previous conception is reasonable, since the reproduction rate (Fogg, 1965), the P/B ratio (Gutelmacher, 1975; Desertova, 1976) and the specific respiratory rate (Laws 1975, Banse, 1976) decrease by increasing size. Furthermore feeding rate is influenced by the size of the cells (Parsons & Takahashi 1973), therefore it would be evident, that species with smaller size become dominant by expendable nutrients. However the opposite occurs in nature, so the size of the cells is not primarily determined by feeding

rate. There is another conception which seems to be more appropriate, namely small cells have high respiratory rate and deplete their nutrient reserve sooner than larger cells by stray nutrient source. Respiration and compensation of damages are key factors in species selection by plankton s. In this way, the restriction of phytoplankton succession in size change is an obligate but necessary simplification.

Cluster analysis performed by Vörös and Kis (1985) supported the phases of Margalef's succession (Margalef, 1960). By regions with medium quantum of biomass, the winter and spring periods correspond to the first phase of succession, the late spring period corresponds to the second and the summer period corresponds to the third phase of succession. The autumn period is in accordance with the turning of this process, which is broken off by the winter. Such reversion is an elementary process in the change of species composition by phytoplankton (Reynolds 1980). The effect of reversion intensified in the most eutrophic area of Lake Balaton (Keszthely Bay) and prevented evolving the total succession. This phenomenon has been observed also at seas (Guillard & Kilham, 1977).

Vörös and Kis (1985) attracted attention to the lack of a general theory and to the necessity of size dependency, in addition searching for a simpler object could be useful in surveys.

Materials and methods

Sampling site

The sampling site was designated in an artificial small pond, located in Budapest, in a yard of a family residence (*Fig. 1-2.*). The climate is temperate and it is moderately shortage of rainfall. The mean yearly temperature is between 10.0-10.2 °C. The water surface is 522 dm², the depths is 30 cm. The bottom of the pond is covered by gravel and organic sediment. The water level was constant, there was no outflow. The evaporated water was replaced with water from the tap. During the whole survey no treatment was applied, no plants were removed. In winter the pond was frozen in, but it has never frozen in to the bottom.

The plants, animals and the sediment were introduced from a reach of Creek Szilas, opened up earlier with detailed examinations. Furthermore different creatures could colonize the pond from the air spreading passively, or actively from the soil or air. The northern part of the pond and its three corners were covered with plants (*Fig. 3.*). Trees were not present in the vicinity. The following plants were characteristics of the pond: *Iris pseudacorus*, *Carex acutiformis*, *Mentha aquatica*, *Myosotis palustris*, *Typha latifolia*, *Juncus effusus*, *Sium* sp, *Sparganium* sp..

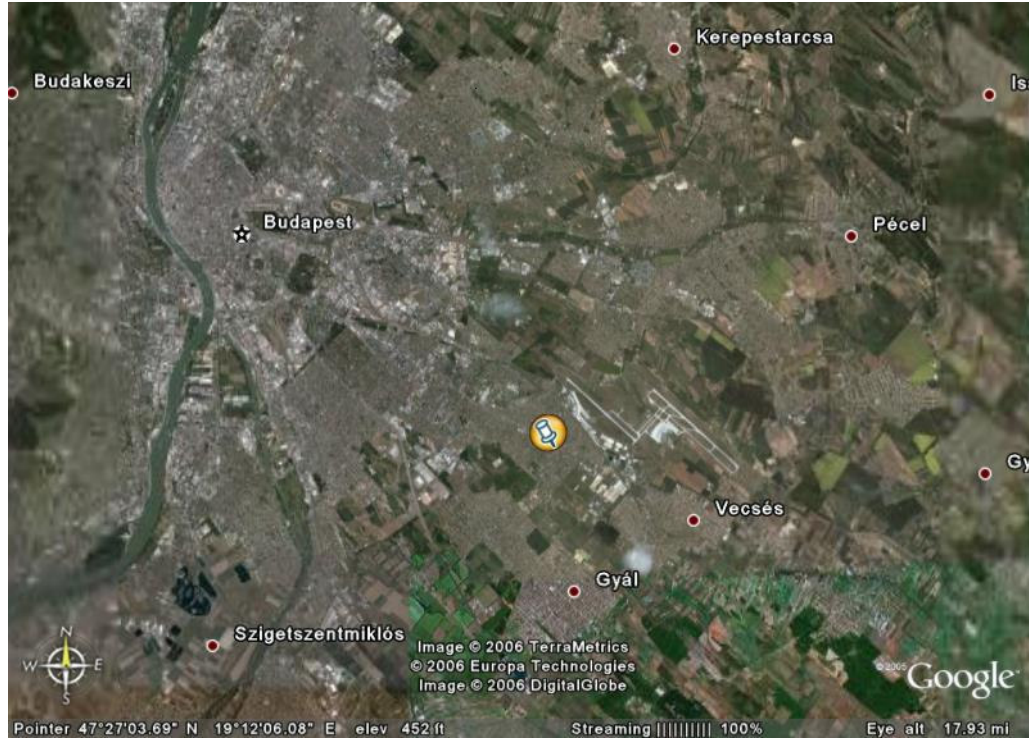


Figure 1. Distant record of the countryside. The sampling site is marked.

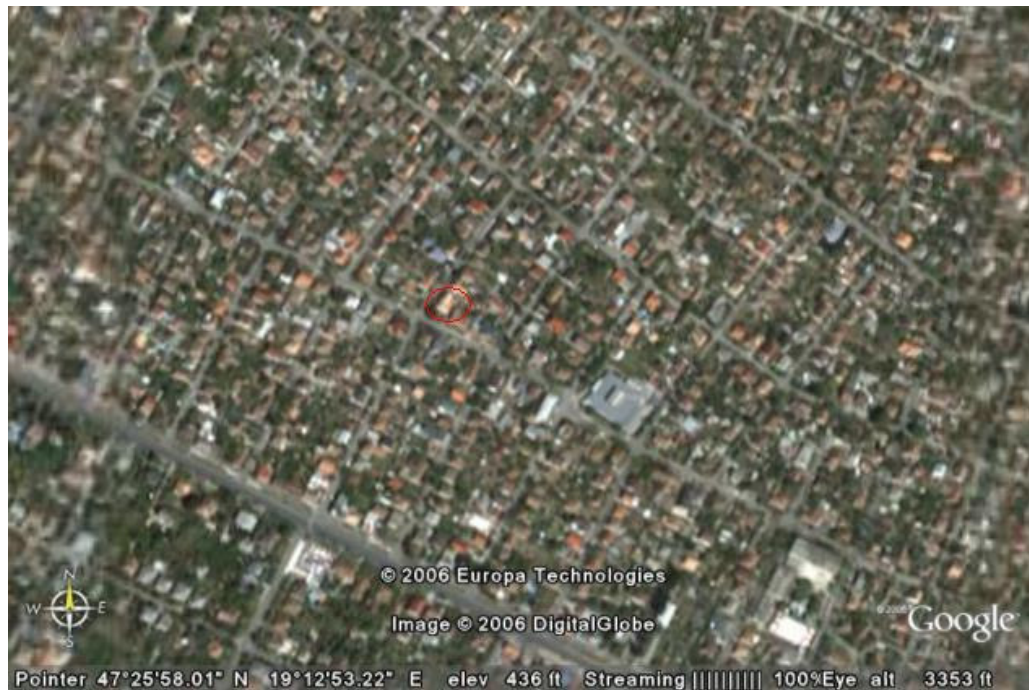


Figure 2. Near record of the countryside. The sampling site is marked.



Figure 3. Photograph of the examined pond taken in summer 2004.

Sampling method of zooplankton and processing of samples

The sampling was conducted weekly from March 2004 to October 2005, except in winter, when sampling was more infrequent because of the low abundance. In summer and in early autumn the abundance was high, therefore just the half or the quarter of the samples were processed, then data were multiplied by two or four. Zooplankton was sampled using a plankton net (17cm diameter, 250 μ m mesh size) always at the same mode. The sampling was representative, samples were taken systematically from the whole water-column. 20 litres of water were filtered. Sample was immediately handled with heat water, this treatment prevents the planktonic organism from contraction, making it easier to identify them later. Afterwards sample was sorted in a laboratory under binocular microscope. Nauplii and Rotatoria were not determined. Identifying was performed to the closest taxa level. After sorting and counting, animals were preserved in formaldehyde, and some groups were identified later to species level.

Sampling method of macroinvertebrates and processing of samples

Sampling was performed biweekly from March 2004 to October 2005. Samples were taken from three locations.

- Underlay: collecting was conducted from three points of the pond (halfway and on the two ulterior brinks of the pond). The spit was a pot fixed to a handle. During one bailing, the sediment and also water got into the pot. After sedimentation (it took few minutes) water was decanted partly, and the leftover was percolated. Percolation was carried out using a sieve with small mesh size, and also a strainer to avoid falling rough detritus into the sample. The filtrate was searched. The underlay was sampled three times at every turn.

- Water column: the spit was a strainer fixed to a long handle (1mm mesh size). Samples were taken from different points of the pond by 6 bailings. Plants getting into the strainer were poured into a basin. After bailings, parts of the plants were leached with water-course (to the strainer). For other straining vide supra. In summer, because of the high abundance, sampling size was middled (3 bailings instead of 6).
- Surface of the water: animals observed on the surface, were counted and estimated.

Sampling method of phytoplankton and processing of samples

Pytoplankton was sampled by taking out x litre water of the pond from different points (the volume was not determined). With this 4X50cm³ water was taken out and spun with an ultracentrifuge. Then 4X5cm³ water get into a vessel and 3X1 drop from it is being examined.

Additional survey: taking out x litre water from different points of the pond and comparing the samples.

Simulation methods

For ecological modelling discretely represented time and deterministic simulation approach were applied in this work. Abundance was given daily (discrete), and the outcome leads to the same result at same conditions (deterministic). The predictions are valid only for the examined pond and at unchanged conditions (except temperature). Zooplankton and *Ischnura pumilio* (macroinvertebrate) were simulated by considering only temperature and their abundance at the previous day, whereas phytoplankton were simulated by considering temperature and abundance of three other taxa (*Ischnura pumilio*, *Cyclopoida*, *Eudiaptomus zachariasii*). Calculations were made with MS Excel, and its Solver optimiser programs.

Statistical analysis

Tukey-test was used to evaluate the results of the modelling. Scenarios and historical data series (see later) can be considered as treatments, therefore we can make a comparison between them with the mentioned method. Our question was, if there is any difference between the treatments (see Results). All statistical analysis was performed using Past software (version 1.36, Copyright Hammer and Harper 1999-2005).

Use of terms

- Climatic change scenario: a probable combination of the change of climatic conditions, which can be used for testing the possible effects and estimating the reaction on these changes (Varga-Haszonits 2003).
- Morphon: a category that takes into account the given animal's taxonomical position, ontogenetical state and body size at the same time. The use of this category is justified for the investigation of seasonal dynamics, as here it is a clear concept.
- Seasonal dynamics: seasonal dynamics is temporal change in the examined assemblage (change in abundance, species composition, or biomass) which is regulated by the temperature among others.

- Simulation: creating artificial data series with mathematical models, which are reminiscent of data for temporal coenological state change.
- Simulation model: formulating hypothesis and conditions with mathematical methods concerning temporal state change.
- Zooplankton: in our work, zooplankton are animals kept by the plankton net used in our survey. This definition differs from that in the literature, but it is methodically more consistent.

Results

Faunistic overview

Table 1 shows the identified taxa and species occurred in zooplankton samples. In the case of cyclopoids, we distinguished the males and females. Many animals were present as larvae. Contrary to the conventional definition of zooplankton, here are some taxa not belonging to zooplankton traditionally. *Table 2* shows the identified taxa and species found in macroinvertebrate samples. Some groups are also present in zooplankton samples (such as Copepoda).

Table 1. The identified taxa (morpha) and species of the zooplankton samples, with the maximum abundance, mean and standard deviation values gathered during the survey. The values refer to the individual numbers found in 20 litre water.

Taxa, morpha	maximum	mean	SD
Ostracoda	2404	430.31	558.54
Collembola	13	0.47	1.96
Cyclopoida (female)	1816	400.79	450.55
Chironomidae 1 (larva)	24	2.36	4.90
Calanoida (copepodite)	191	7.56	27.77
Insecta (larva)	1	0.01	0.12
<i>Eudiaptomus zachariasii</i>	468	78.96	107.65
Cyclopoida (male)	188	23.24	38.40
Odonata (larva)	12	0.40	1.62
Daphniidae	3568	597.44	802.22
Arthropoda 1 (larva)	1	0.01	0.12
Arthropoda 2 (larva)	1	0.01	0.12
Chidoridae	836	96.08	161.99
Culicidae 1 (larva)	8	0.58	1.52
Chironomidae 2 (larva)	20	1.67	3.55
Arthropoda 3 (larva)	12	1.31	2.99
Arthropoda 4 (larva)	8	0.33	1.46
Baetidae (larva)	24	1.60	3.76
Hydrocarina	8	0.63	1.67
<i>Chlorohydra viridissima</i>	84	4.24	12.09
Diptera (larva)	4	0.06	0.47
Tabanidae 1 (larva)	4	0.06	0.47
Zygoptera (larva)	4	0.06	0.47
<i>Asellus aquaticus</i>	32	3.29	7.06
Culicidae 2 (larva)	84	3.94	16.56

(Table 1 continued) Taxa, morpha	maximum	mean	SD
<i>Chaoborus sp.</i> (larva)	4	0.17	0.80
Diptera (pupa)	4	0.11	0.66
Ostracoda 2	28	2.26	4.79
Arthropoda 5 (larva)	1	0.01	0.12
Insecta	1	0.01	0.12
Arthropoda 6 (larva)	1	0.03	0.17
Culicidae 3 (larva)	6	0.15	0.78
Tabanidae 2 (larva)	2	0.04	0.26
Hydrozoa	8	0.31	1.24
Collembola (larva)	4	0.06	0.47

Table 2. The identified taxa and species of macroinvertebrate samples gathered during the survey.

taxa		
Hydrozoa	Diplopoda	Homoptera
<i>Chlorohydra viridissima</i>	Julidae	Aphidinea
Platyhelminthes	Crustacea	Heteroptera
<i>Policelis nigra</i>	<i>Gammarus roeseli</i>	<i>Gerris lacustris</i>
<i>Dendrocoelum lacteum</i>	<i>Asellus aquaticus</i>	<i>Hydrometra stagnorum</i>
	<i>Synurella ambulans</i>	<i>Plea sp.</i>
Oligochaeta	Copepoda	<i>Corixa sp.</i>
<i>Lumbricus variegatus</i>	Cladocera	<i>Notonecta glauca</i>
	Ostracoda	<i>Nepa cinerea</i>
Hirudinea		
<i>Erpobdella octoculata</i>	Arachnoidea	Coleoptera
<i>Haemopsis sanguisuga</i>	Araneidea	Haliplidae
		<i>Haliplus ruficollis</i>
Gastropoda	Ephemeroptera	
<i>Succinea sp.</i>	<i>Cloeon dipterum</i>	Hydraenidae
<i>Valvata cristata</i>		
<i>Bithynia tentaculata</i>	Odonata	Diptera
<i>Limnea palustris</i>	Zygoptera	Dixidae
	Anisoptera	Tipulidae
Bivalvia	<i>Ischnura pumilio</i>	Culicidae
<i>Pisidium sp.</i>	<i>Coenagrion poella</i>	Nematocera
	<i>Libellula depressa</i>	<i>Chaoborus sp.</i>
	<i>Sympetrum sanguineum</i>	Chironomidae

Modelling

Patterns of seasonal dynamics will be described using a simulation model. Simulation models play an important role in practice. In order to model the seasonal dynamics of phytoplankton, we chose the whole phytoplankton community, since we thought it is competent for itself and also we did not have the chance to identify taxa. In the phytoplankton samples there were also other groups not belonging to phytoplankton (Ciliata, Rotatoria, nauplius larvae and some unidentified taxa), and these were included in the model. From zooplankton community, Eudiaptomus zachariasii (frequent Calanoida species) and Cyclopoida were chosen to simulation modelling. Ischnura pumilio was a predominant species of macroinvertebrate assemblage, therefore it seemed to be appropriate for modelling its seasonal dynamics. We hope that we managed to select the crucial taxa for modelling from different trophic positions, and we tried to modelling the seasonal dynamics including the four groups. The model-system was run with the data series of climate change scenarios.

The mathematical form is the following:

$$N_{t+1}=N_t \cdot R_t \text{ (Eq. 1)} \quad (\text{Eq.1})$$

where N_{t+1} is the individual number of the population at the following day, N_t is the individual number of the population at the time „t”, R_t is growth rate depending on the temperature. R_t is a mat function, which comes about fitting IF mat functions together (used in MS Excel). The occurring temperature values are divided into intervals, and each interval gets a value (parameters). Calculating the abundance only the individual number of the previous day and one temperature parameter (it depends on the temperature at previous day) are considered. Parameters are optimized with the Solver program of MS Excel in the following manner: the starting-point is the first observed abundance of the population. Also in the model this is the first value, and in accordance with the form Eq. 1, the abundance of population is calculated for each day. The difference between the observed and generated values are computed, squared, then added, and finally the sum of squares is minimalized (least squares fitting).

In the case of phytoplankton the mathematical form is the following:

$$N_{t+1}=N_t \cdot R_t \cdot R_{Eud} \cdot R_{Cyc} \cdot R_{Isch} \text{ (Eq. 2)} \quad (\text{Eq.2})$$

where N_{t+1} is the individual number of the population at the following day, N_t is the individual number of the population at the time „t”, R_t is growth rate depending on the temperature, R_{Eud} is the growth rate depending on Eudiaptomus zachariasii, R_{Cyc} is the growth rate depending on Cyclopoida, and R_{Isch} is the growth rate depending on Ischnura pumilio. In the case of the last three factors, the same method was used for calculating their values, like by the temperature (optimizing).

Mean daily temperature was used in the models. Meteorological data were supplied by the OMSZ, measured in observation hut in Budapest Lőrinc, close to the pond.

The four groups playing part in modelling, their observed and simulated patterns are presented in *Figure4-Figure 7*.

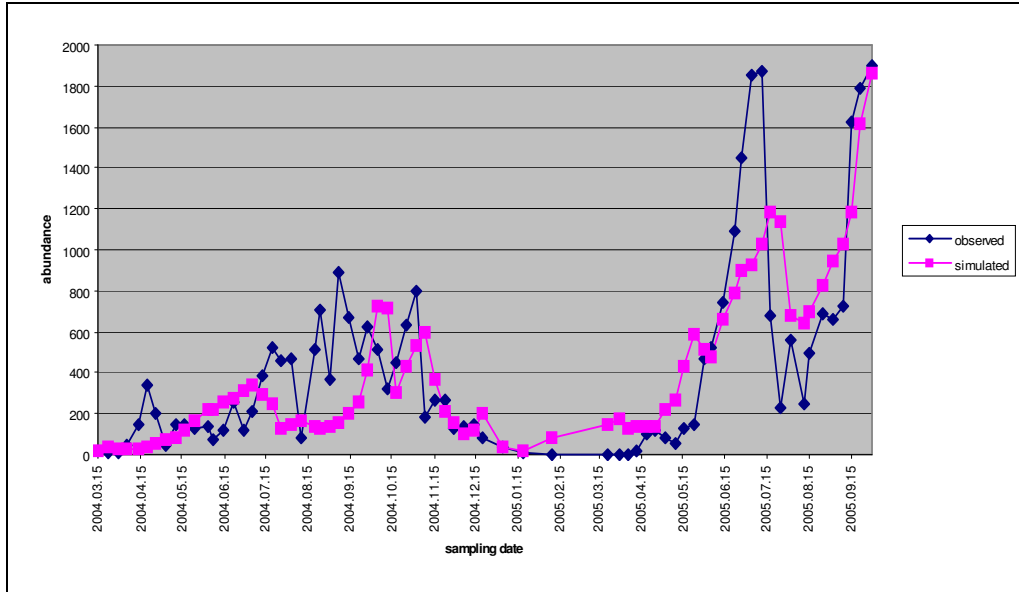


Figure 4. The observed and simulated individual numbers by cycloids during the survey.

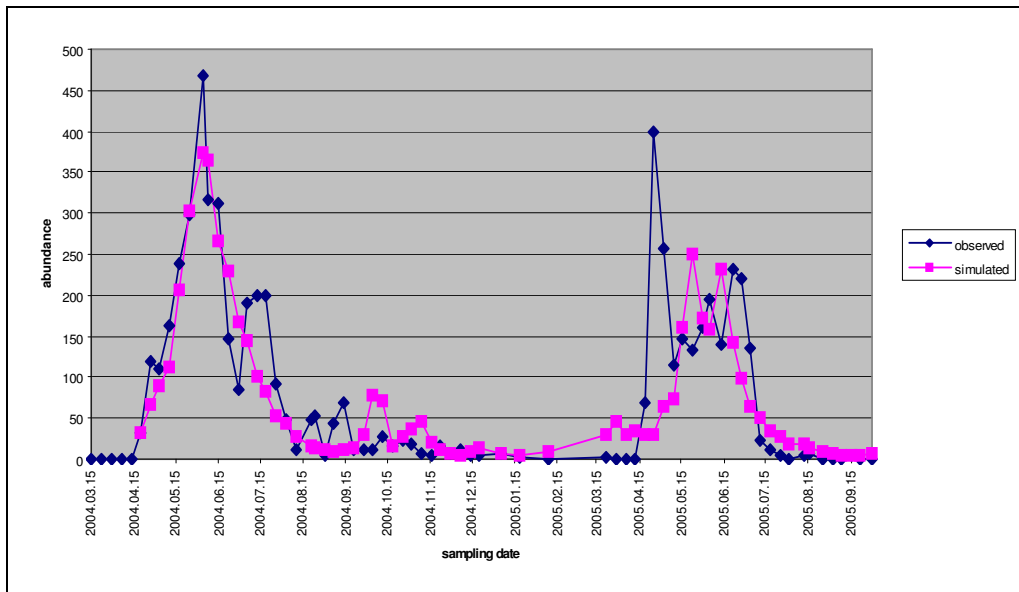


Figure 5. The observed and simulated individual numbers by *Eudiaptomus zachariasii* during the survey.

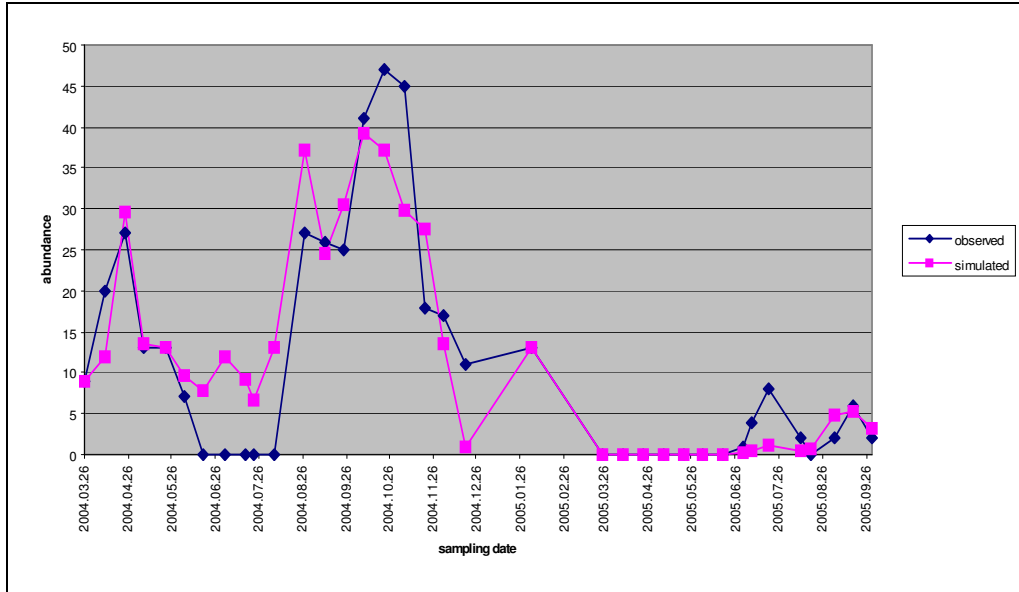


Figure 6. The observed and simulated individual numbers by *Ischnura pumilio* during the survey.

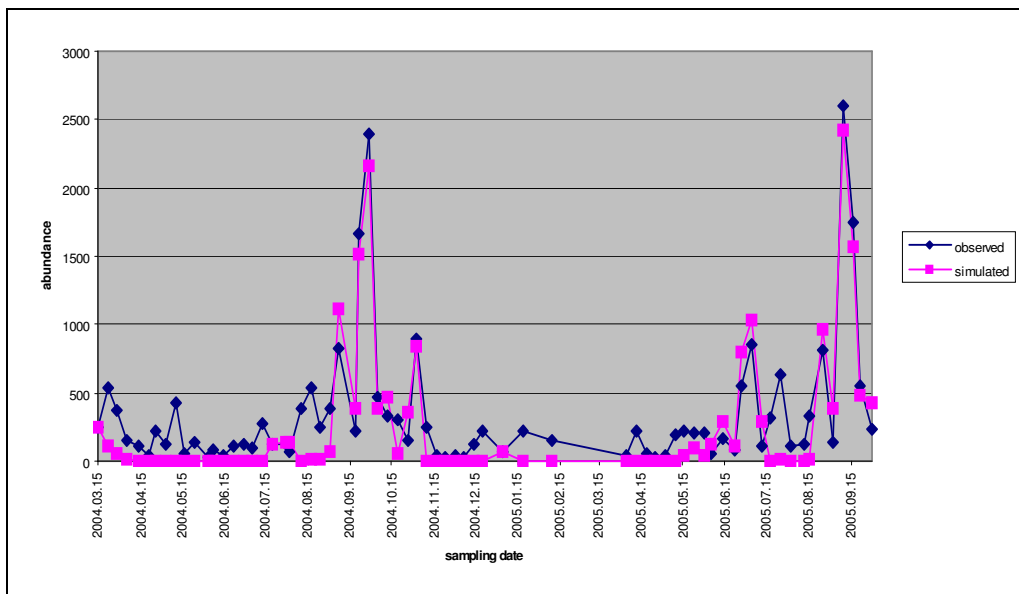


Figure 7. The observed and simulated individual numbers by phytoplankton during the survey.

Climate change scenarios, running the model with different scenario data series and historical data.

General Circulation Models (GCM) describe the physical process of the atmosphere, oceans and surface, providing an overall view from the prospective. These models supply data series with low resolution, which should be downscaled to the given region. UKLO, UKHI and UKTR models were laboured in England. The first two models are

equilibrium scenarios, which estimate the meteorological parameters after setting the equilibrium, calculating with doubled carbon-dioxid level. In the names the LO and HI posterior constituents refer to the low and high resolution. The third scenario is a transient model, which is appropriate to making long-term predictions, and tracking the climate permanently. GFDL2535 and GFDL5564 GCM-s were developed in the United States. These models calculate with 1 per cent annual growth of carbon-dioxid concentration. In fine it is worth mentioning the BASE scenario, reckon with the present climate.

These scenarios were used up in our investigation. Data series were downscaled to the region of Debrecen, and specified for the period around 2050. Each data series of scenarios included 31 years, and also the historical data series included 31 years from 1960 to 1990. In this manner we got for each group, taking part in modelling, 31 predicted data series (daily abundance). The model was launched from the first January, excluding by *Ischnura pumilio*, the base individual number was 1 in each cases (modulating the base abundance is not really effecting the results).

Testing the seasonal dynamics of cyclopooids on scenarios and historical data series

Predictions were accepted until the day 330, as at the end of the year the abundance was overpredicted by some scenarios. In *Table 3* we tried to summarize the results of modelling. Three aspects of predictions are displayed: the yearly maximum abundance, the supervision of the yearly maximum abundance, and the yearly total maximum abundance. The values of these three variables were divided into intervals, and the number of the years belonging to the intervals per scenarios, was given.

Based on *Table 3*, a transition can be seen: tending to UKHI and UKLO the maximum abundance is less, and the maximum abundance occurs sooner. A noticeable resemblance is between BASE-Historical data and GFDL2-GFDL5. UKLO seem to be discrete, with very low abundance (the maximum abundance is under 11 at each year).

Table 3. The results of the model for *Cyclopoidea* running with the data series of scenarios and historical data series.

Maximum abundance							
years	Historical	BASE	GFDL2	GFDL5	UKTR	UKHI	UKLO
1-10	5	0	4	6	16	15	31
11-100	4	10	8	8	12	14	0
101-500	13	6	7	9	2	1	0
501<	9	15	12	8	1	1	0
Supervention of maximum abundance (which day of the year)							
years	Historical	BASE	GFDL2	GFDL5	UKTR	UKHI	UKLO
1-150	2	1	3	5	6	8	26
151-250	0	0	1	1	1	13	5
251-300	24	27	15	9	11	1	0
300<	5	3	12	16	13	9	0
Total maximum abundance							
years	Historical	BASE	GFDL2	GFDL5	UKTR	UKHI	UKLO
<500	3	0	2	5	13	7	30
500-5000	6	8	10	10	15	21	1
5001-10000	6	4	2	3	1	1	0
10000<	16	19	17	13	2	2	0

Testing the seasonal dynamics of Eudiaptomus zachariasii on scenarios and historical data series

Based on *Table 4*, we can make similar statements to the cyclopoids. The maximum abundance gradually decreases and it eventuates sooner tending to UKLO. The order of magnitude concerning the total individual numbers is pretty much the same. Noticeable similarity is between UKHI-UKLO-UKTR.

Table 4. The results of the model for *Eudiaptomus zachariasii* running with the data series of scenarios and historical data series.

Maximum abundance							
years	Historical	BASE	GFDL2	GFDL5	UKTR	UKHI	UKLO
<20	13	13	13	20	30	28	30
20-50	12	7	10	4	0	1	1
51-100	1	2	1	2	1	2	0
101-500	1	7	4	5	0	0	0
500<	4	2	3	0	0	0	0
Supervention of maximum abundance (which day of the year)							
years	Historical	BASE	GFDL2	GFDL5	UKTR	UKHI	UKLO
1-50	7	6	5	7	21	17	25
51-100	14	8	15	9	2	13	6
101-200	5	8	9	13	8	1	0
200<	5	9	2	2	0	0	0
Total maximum abundance							
years	Historical	BASE	GFDL2	GFDL5	UKTR	UKHI	UKLO
<1000	15	14	17	20	29	28	31
1000-3000	7	6	5	5	1	3	0
3001-10000	4	6	5	2	1	0	0
10000<	5	5	4	4	0	0	0

Testing the seasonal dynamics of Ischnura pumilio on scenarios and historical data series

Predictions were considered until the day 250 because of the high individual numbers (overprediction, like by the cyclopoids). According to *Table 5*, a reverse trend stands out as compared to the previous predictions, namely the maximum abundance increases and it occurs later. The previous transition can be noticed here as well, but it is the opposite, that is UKHI-UKLO is characterized by the highest individual numbers. According to UKLO, the supervention of maximum abundance is not so different from BASE. The results of historical data-BASE and GFDL2535-GFDL5564 are similar, but UKHI and UKLO differ from each other. It is conspicuous when looking the supervention of maximum abundance, where GFDL2535 and GFDL5564 produced the same values, whereas UKHI and UKLO differ. It is worth paying attention to the high individual numbers in some cases (higher than by the zooplankton, whether above 5000).

Table 5. The results of the model for *Ischnura pumilio* running with the data series of scenarios and historical data series.

Maximum abundance							
years	Historical	BASE	GFDL2	GFDL5	UKTR	UKHI	UKLO
<100	30	26	18	12	19	14	7
100-1000	1	5	6	10	4	7	10
1001-5000	0	0	6	4	7	6	7
5000<	0	0	1	5	1	4	7
Supervention of maximum abundance (which day of the year)							
years	Historical	BASE	GFDL2	GFDL5	UKTR	UKHI	UKLO
<150	14	15	2	2	4	4	1
150-200	2	3	0	0	0	1	13
201-225	4	7	5	5	4	3	11
226-250	11	6	24	24	23	23	6
Total maximum abundance							
years	Historical	BASE	GFDL2	GFDL5	UKTR	UKHI	UKLO
<1000	29	25	15	8	16	12	5
1000-10000	2	5	5	11	7	6	8
10001-50000	0	1	9	7	7	8	6
50000<	0	0	2	5	1	4	12

Testing the seasonal dynamics of phytoplankton on scenarios and historical data series

In case of phytoplankton we left out the total maximum abundance from evaluation, as it often occurred „algal blooms” with extreme high abundance while running the model. Based on *Table 6*, a transition is noticeable: tending to UKLO the maximum abundance occurs sooner and the maximum abundance is less. Latter is traceable chiefly by UKLO, while UKHI is similar to the historical results. The outcomes of BASE and historical data are similar.

Table 6. The results of the model for phytoplankton running with the data series of scenarios and historical data series.

Maximum abundance							
years	Historical	BASE	GFDL2	GFDL5	UKTR	UKHI	UKLO
<100	6	5	12	11	12	5	17
100-10000	7	5	3	3	7	4	8
10001-1000000	6	9	2	7	3	10	3
1000000<	12	12	14	10	9	12	3
Supervention of maximum abundance (which day of the year)							
years	Historical	BASE	GFDL2	GFDL5	UKTR	UKHI	UKLO
<200	3	4	11	14	9	26	31
200-275	14	19	4	4	5	0	0
276-300	6	6	10	9	17	1	0
300<	8	2	6	4	0	4	0

Statistical analysis of the results

Hereinafter we analyse the supervision of maximum abundance (which day of the year) with statistical methods among scenarios and historical results. Scenarios and historical data series can be considered as treatments, in this way we can use one-way ANOVA to examine whether there is any difference between groups. Namely we are interested in the statistical differences between the occurring of maximum abundance among scenarios and historical results. However the variances were not homogeneous, therefore only Tukey-test was used for comparing the groups.

Statistical analysis of the results for cycloids

Table 7. Means and standard deviations (SD) for the supervision of maximum abundance running the model for 31 years (for cycloids).

	Historical	BASE	GFDL2	GFDL5	UKTR	UKHI	UKLO
Mean	274.5161	283.8065	271.8065	255.0323	243.5806	183.2903	56.6129
SD	66.03528	43.29081	77.79692	108.5051	113.5082	106.793	76.27174

Table 7 shows the means and standard deviations for the maximum abundance occurring. According to the historical data series, the maximum abundance occurs on the average at the day 274, according to BASE it occurs later by 9 days, while GFDL2535 predicts it 3 days sooner. GFDL5564 and UKTR show a transition. UKHI and UKLO indicate remarkable difference, as UKLO predicts the occurring of maximum abundance at the day 56, whereas UKHI predicts it later. It means a shift in seasonal timing by 7 and 3 months as compared to the historical results. Historical data and BASE are characterized by low SD, UKTR, GFDL5564 and UKHI present high SD.

After Tukey's pairwise comparisons (Table 8), we can draw some conclusions that are the following:

- Comparing historical data and BASE scenario, the p value is around 1, which is the evidence of applicability of the scenarios.
- GFDL2535 and historical data give the same payoff ($p=1$).
- UKHI and UKLO differ significantly from each other and from the other scenarios (except UKTR does not differ significantly from UKHI).
- There is no difference between other groups at 5% level of significance.

Table 8. The results of Tukey's pairwise comparisons. P values are presented in the upper part of the table, Q values are presented in the lower part.

	Historical	BASE	GFDL2	GFDL5	UKTR	UKHI	UKLO
Historical		0.9996	1	0.9767	0.8104	0.000888	2.57E-05
BASE	0.588		0.9983	0.8578	0.5478	0.000158	2.57E-05
GFDL2	0.1715	0.7595		0.9893	0.8687	0.001458	2.57E-05
GFDL5	1.233	1.821	1.062		0.9987	0.02248	2.57E-05
UKTR	1.958	2.546	1.787	0.7248		0.09859	2.57E-05
UKHI	5.774	6.362	5.603	4.541	3.816		2.59E-05
UKLO	13.79	14.38	13.62	12.56	11.83	8.018	

Statistical analysis of the results for Eudiaptomus zachariasi

Table 9. Means and standard deviations (SD) for the supervision of maximum abundance running the model for 31 years (for Eudiaptomus).

	Historical	BASE	GFDL2	GFDL5	UKTR	UKHI	UKLO
Mean	116.2581	150.7742	97.93548	103.7742	56.74194	50.19355	21.80645
SD	101.2466	110.4813	70.37279	75.88312	53.66747	32.41648	32.01085

After Table 9, observing the means a transition can be noticed. The means decrease around UKLO. It means that tending to UKLO, the maximum abundance occurs sooner on the average. On the score of SD similar observations can be set out: decreasing SD-s tending to UKLO. UKHI and UKLO present the same SD.

Based on Tukey's pairwise comparisons (Table 10), we can make the following statements:

- UKLO differs significantly from other scenarios and historical data, excluding UKHI and UKTR.
- UKHI and UKTR differ significantly from BASE and historical data.
- There is no significant difference between other groups at 5% level of significance.

Table 10. The results of Tukey's pairwise comparisons. P values are presented in the upper part of the table, Q values are presented in the lower part.

	Historical	BASE	GFDL2	GFDL5	UKTR	UKHI	UKLO
Historical		0.5198	0.9589	0.9944	0.02519	0.007759	3.41E-05
BASE	2.604		0.07181	0.1565	3.52E-05	2.70E-05	2.57E-05
GFDL2	1.382	3.986		0.9999	0.2966	0.1428	0.000971
GFDL5	0.9419	3.546	0.4405		0.1559	0.06444	0.000264
UKTR	4.49	7.094	3.108	3.548		0.9999	0.5046
UKHI	4.984	7.588	3.602	4.042	0.494		0.7363
UKLO	7.126	9.73	5.744	6.184	2.636	2.142	

Statistical analysis of the results for Ischnura pumilio

Table 11. Means and standard deviations (SD) for the supervision of maximum abundance running the model for 31 years (for Ischnura).

	Historical	BASE	GFDL2	GFDL5	UKTR	UKHI	UKLO
Mean	139.3548	132.2903	221.0645	230.9677	208.7097	218.2903	203.6774
SD	104.6071	103.3896	59.96051	35.69546	82.06834	59.89724	33.272

Based on Table 11, the supervision of maximum abundance shifts on later date, tending to UKLO. The means can be sorted into three groups: historical-BASE, GFDL2535-GFDL5564, and UKTR-UKHI-UKLO. It is interesting that the GFDL scenarios are characterized by the highest means, not UKHI-UKLO. Historical data and

BASE are marked by the highest level of SD, whereas UKLO and GFDL5564 are characterized by the least SD. UKLO-GFDL5564 and UKHI-GFDL2535 are very similar regarding SD.

Based on *Table 12*, the results of Tukey's pairwise comparisons are the following:

- Comparing historical data and BASE scenario, the p value is around 1, which is the evidence of applicability of the scenarios.
- Historical data and BASE differ significantly from other scenarios.
- There are no other significant differences, but it should be noted that UKHI and GFDL2535 together with UKLO and UKTR are characterized by p value 1. These similarities were prominent when examining the means and SD-s.

Table 12. The results of Tukey's pairwise comparisons. P values are presented in the upper part of the table, Q values are presented in the lower part.

	Historical	BASE	GFDL2	GFDL5	UKTR	UKHI	UKLO
Historical		0.9998	0.000267	4.34E-05	0.003919	0.000498	0.01044
BASE	0.5343		6.46E-05	2.79E-05	0.000873	0.000107	0.00258
GFDL2	6.18	6.715		0.9984	0.9946	1	0.9678
GFDL5	6.929	7.464	0.749		0.898	0.9938	0.7689
UKTR	5.246	5.78	0.9345	1.684		0.9987	1
UKHI	5.97	6.505	0.2098	0.9589	0.7246		0.9868
UKLO	4.865	5.399	1.315	2.064	0.3806	1.105	

Statistical analysis of the results for phytoplankton

Table 13. Means and standard deviations (SD) for the supervision of maximum abundance running the model for 31 years (for phytoplankton).

	Historical	BASE	GFDL2	GFDL5	UKTR	UKHI	UKLO
Mean	256.6774	236.871	202.8065	193.6774	203.9032	158.9677	88.70968
SD	90.84029	93.41725	133.9165	124.1269	123.3741	88.12736	63.12062

According to *Table 13*, a transition is noticeable, that is the means decrease tending to UKLO, accordingly the maximum abundance occurs more and more soon. The highest levels of SD display GFDL scenarios and UKTR, whereas UKLO presents the least SD.

Based on *Table 14*, the following statements can be made (on the score of the Tukey-test):

- UKHI differs significantly from historical data.
- UKLO differs significantly from other scenarios excluding UKHI.
- The p value of the comparison between historical data and BASE is around 1, which is the evidence of applicability of the scenarios.
- UKTR and GFDL2535 scenarios are very similar, which is emphasized by their p value (p=1).

Table 14. The results of Tukey's pairwise comparisons. *P* values are presented in the upper part of the table, *Q* values are presented in the lower part.

	Historical	BASE	GFDL2	GFDL5	UKTR	UKHI	UKLO
Historical		0.9899	0.4028	0.2156	0.4292	0.004701	2.57E-05
BASE	1.049		0.863	0.6705	0.8805	0.05441	2.61E-05
GFDL2	2.854	1.805		0.9999	1	0.6545	0.000398
GFDL5	3.338	2.289	0.4837		0.9998	0.852	0.001637
UKTR	2.796	1.747	0.05811	0.5418		0.6271	0.000335
UKHI	5.177	4.128	2.323	1.839	2.381		0.1163
UKLO	8.9	7.851	6.046	5.562	6.104	3.723	

Discussion

Simulation modelling

Our model is simplified as it considers only temperature and trophic connections (only by phytoplankton) to predicting the abundance. We could see that the model predicted similar temporal patterns as compared to the observed ones. Several authors draw our attention to the central regulatory role of the temperature. According to Christou and Moraitou-Apostolopoulou (1995) temperature is the most important factor regulating the temporal variance of mesozooplankton. Iguchi (2004) and Dippner, Kornilovs, Sidrevics (2000) get to similar results. Temperature was in negative or positive correlation with almost all copepods abundances, and this correlation depended on the ecological habits of the species (Christou, 1998). Long-term changes of many copepod species and other zooplankton groups have been also found to be related with changes in temperature and salinity (Viitasalo et al., 1990; Meise-Munns et al., 1990; Baranovic et al., 1993).

In so far as we accept the main role of the temperature in regulating the abundance, predictions can be made for the period around 2050 by means of scenarios. The results show decreasing abundance by the scenarios calculating with global warming (excluding *Ischnura pumilio*), which can be interpreted by the responsiveness of the species for the change in temperature. Physiological reasons may be responsible for this phenomenon. We found an example for it in the literature: Puelles, Pinot and Valencia (2003) found decreasing abundance by the zooplankton during 5 years, which was related with global warming.

Modelling the seasonal dynamics

Cyclopoids are susceptible of warming, in answer to global warming, their abundances decrease and their seasonal timing changes, insofar as maximum abundance occurs sooner among years. UKLO and UKHI scenarios predict drastic warming as they calculate with doubled level of carbon-dioxid. The intense similarity of historical data and BASE is not strange, since the BASE scenario calculates with contemporary climatic conditions. The discrete result of UKTR is attributable to the model, which is a transient model. The small differences between UKHI and UKLO can be originated in the resolution. GFDL scenarios calculate with a low increase in the level of carbon-dioxid, therefore these scenarios have an intermediate position between BASE and UKHI-UKLO. Concerning *Eudiaptomus zacharias* the former explanations are true here as well. In answer to global warming, their abundances decrease and maximum

abundance occurs sooner. The abundance of *Ischnura pumilio* does not decrease, but increases in answer to global warming (after UKHI and UKLO scenarios). Maximum abundances occur later as compared to the present conditions, but it is not so univocal by UKLO. In case of phytoplankton the effects of climate changes is analogous with observed by the zooplankton.

Statistical analysis of the results

Surveying the results for cyclopoids UKHI and UKTR scenarios do not differ significantly from each other. It means that these two scenarios are transient to UKLO, which predicts the supervision of maximum abundance sooner. Historical data and BASE are characterized by the least SD, whereas by *Eudiaptomus* it was the reverse. The high SD of UKHI can be attributable to the high resolution of the model. The differences between the cyclopoids and *Eudiaptomus* may be related with the physiological optima of these organisms.

Concerning *Eudiaptomus zachariasii* the separation of UKHI and UKLO from other scenarios and their similar behaviour was visible based on *Table 4 and Table 9*. Statistical analysis supports this observation. The reason for the separation is the global warming, according to the high level of carbon-dioxid, and the resolution does not influence these results, as there is no significant difference between UKHI and UKLO. The separation of GFDL5564 is attributable to its position, as it presents a transition from BASE to UKLO. The discrete behaviour of UKTR can be explained by the model (transient model). High standard deviation can be interpreted as extreme values of temperature eventuating in the climate, which changes the time of reproduction of the organism in question. The high standard deviation of BASE refers to years, when often occurs change in seasonal timing (supervention of maximum abundance changes with high SD), whereas the low standard deviation of UKHI and UKLO implies square conditions (the maximum abundance occurs sooner, but it remains within a determinate interval).

In case of *Ischnura pumilio* each scenario differs from the historical data excluding BASE, because BASE calculates with present climatic conditions. UKHI and UKLO do not give so similar results and do not differentiate from the other scenarios as compared to the zooplankton.

Ultimately by the phytoplankton there is no significant difference between UKHI and UKLO (only by cylopoids were significant difference between UKHI and UKLO), therefore spatial resolution does not have pregnant effect on the results (the only difference between UKHI and UKLO is the resolution). Herein UKTR does not differentiate from the other scenarios.

Our model is simplistic, but it grounds for making more complex approaches. This model can be developed in the future. We consider improving our model by using more data series, species and sampling sites. Additional climate change scenarios could be used for exploring the possible effects of climate change more detailed. Extending such surveys to natural lakes can be utilized in the future by giving the possible trend in the abundance change. Predictions are simply informant and should be handled watchful, but they are remarkable: notable changes may occur on earth after 50 years.

Acknowledgements. The authors are grateful to Dénes Türei for his assistance. This investigation was supported by the NKFP 4/037/2001, and the OTKA T042583. This paper is a contribution to the VAHAVA project. Meteorological data were provided by the OMSZ. Department of Systematic Zoology and Ecology, Eötvös Loránd University and Department of Mathematics and Informatics, Corvinus University of Budapest supported this research.

REFERENCES

- [1] Abrantes, N., Goncalves, F. (2003): The dynamics of *Ceriodaphnia pulchella* (Cladocera) in laboratory. – *Acta Oecologica* 24: 245-249.
- [2] Ambler, J. W., Cloern, J. E., Hutchinson, A. (1985): Seasonal cycles of zooplankton from San Francisco Bay. – *Hydrobiologia* 129: 177-197.
- [3] Angelini, R., Petrere, M. Jr. (2000): A model for the plankton system of the Broa reservoir, Sao Carlos, Brazil. – *Ecological Modelling* 126: 131-137.
- [4] Arashkevich, E., Wassmann, P., Pasternak, A., Riser, C. W. (2002): Seasonal and spatial changes in biomass, structure, and development progress of the zooplankton community in the Barents Sea. – *Journal of Marine Systems* 38: 125-145.
- [5] Banse, K. (1976): Rates of growth, respiration and photosynthesis of unicellular algae as related to cell size. – a review. *J. Phycol.* 12: 135-140.
- [6] Baranovic, A., Solic, M., Vucetic, T., Krstulovic, N. (1993): Temporal fluctuations of zooplankton and bacteria in the middle Adriatic Sea. – *Marine Ecology Progress Series* 92: 65-75.
- [7] Bernot, R. J., Dodds, W. K., Quist, M. C., Guy, C. S. (2004): Spatial and temporal variability of zooplankton in a great plains reservoir. – *Hydrobiologia* 525: 101-112.
- [8] Broekhuizen, N., Heath, M. R., Hay, S. J., Gurney, W. S. C. (1995): Modelling the dynamics of the North Sea's mesozooplankton. – *Netherlands Journal of Sea Research* 33 (3/4): 381-406.
- [9] Caceres, C. E. (1998): Seasonal dynamics and interspecific competition in Oneida Lake *Daphnia*. – *Oecologia* 115: 233-244.
- [10] Chiba, S., Saino, T. (2003): Variation in mesozooplankton community structure in the Japan/East Sea (1991-1999) with possible influence of the ENSO scale climatic variability. – *Progress in Oceanography* 57: 317-339.
- [11] Christou, E. D. (1998): Interannual variability of copepods in a Mediterranean coastal area (Saronikus Gulf, Aegean Sea). – *Journal of Marine Systems* 15: 523-532.
- [12] Christou, E. D., Moraitou-Apostolopoulou, M. (1995): Metabolism and feeding of mesozooplankton at the eastern Mediterranean (Hellenic coastal waters). – *Marine Ecology Progress Series* 126: 39-48.
- [13] Cohen, J. E. (1994): Marine and continental food webs: three paradoxes? – *Phil. Trans R. Soc. Lond. B.* 343: 57-69.
- [14] Connel, J. (1978): Diversity in tropical rain forests and coral reefs. – *Science* 199: 1304-1310.
- [15] Desertova, B. (1976): Productivity of individual algal species in natural phytoplankton assemblage determined by means of autoradiography. – *Arch. Hydrobiol. Suppl.* 49: 415-449.
- [16] Dippner, J. W., Kornilovs, G., Sidrevics, L. (2000): Long-term variability of mesozooplankton in the Central Baltic Sea. – *Journal of Marine Systems* 25: 23-31.
- [17] Dolganova, N. T., Zuenko, Y. I., 2004. Seasonal and inter-annual dynamics of mesoplankton in the northwestern Japan Sea.– *Progress in Oceanography* 61: 227-243.
- [18] Dózsa-Farkas, K., Csúzdi, Cs., Farkas, J., Pobozsnyi, M. (1999): A parti turzások állatközösségeinek szezonális dinamikája és szerepe a természetes dekompozícióban. –

- In: Salánki, J. & Padisák, J. (ed) A Balaton kutatásának 1998-as eredményei, MTA: 71-80.
- [19] Elton, C. (1927): *Animal Ecology* (New impression with additional notes 1935). – New York, Macmillian.
- [20] Ferrara, O., Vagaggini, D., Margaritoria, F. G. (2002): Zooplankton abundance and diversity in Lake Bracciano, Latium, Italy. – *Journal of Limnology* 61(2): 169-175.
- [21] Fogg, G., E. (1965): *Algal Cultures and Phytoplankton Ecology*. – Univ. of Wisconsin Press, Madison.
- [22] Guillard, R. L., Kilham, P. (1977): The ecology of marine planktonic diatoms. – In: Werner, D. (ed.): *The Biology of Diatoms: 372-469*. Univ. of Calif. Press., Berkeley and Los Angeles.
- [23] Gutelmacher, B. L. (1975): Relative significance of some species of algae in plankton primary production. – *Arch. Hydrobiol.* 75: 318-328.
- [24] Hardin, G. (1960): The competitive exclusion theory. – *Science* 131: 1292-1297.
- [25] Hutchinson, G. E. (1961): The paradox of plankton. – *Amer. Nat.* 95: 137-147.
- [26] Iguchi, N. (2004): Spatial/temporal variations in zooplankton biomass and ecological characteristics of major species in the southern part of the Japan Sea: a review. – *Progress in Oceanography* 61: 213-225.
- [27] Ikauniece, A. (2001): Long-term abundance dynamics of coastal zooplankton in the Gulf of Riga. – *Environment International* 26: 175-181.
- [28] Jorgensen, S. E. (1994): *Fundamentals of ecological modeling* (2nd edition). – *Developments in environmental modeling* 19. Elsevier, Amsterdam, London, New York, Tokyo.
- [29] Jorgensen, E. S., Padisák, J. (1996): Does the Intermediate Disturbance Hypothesis comply with thermodynamics? – *Hydrobiologia* 323: 9-21.
- [30] Kalf, J., Knoechel, R. (1978): Phytoplankton and their dynamics in oligotrophic and eutrophic lakes. – *Ann. Rev. Ecol. Syst.* 9: 475-495.
- [31] Kovalev, A. V., Mazzocchi, M. G., Kideys, A. E., Toklu, B., Skryabin, V. A. (2003): Seasonal Changes in the Composition and Abundance of Zooplankton in the Seas of the Mediterranean Basin. – *Turkish Journal of Zoology* 27: 205-219.
- [32] Landry, M. R., Al-Mutairi, H., Selph, K. E., Christensen, S., Nunnery, S. (2001): Seasonal patterns of mesozooplankton abundance and biomass at Station ALOHA. – *Deep-Sea Research II* 48: 2037-2061.
- [33] Láng, I., Csete, L., Jolánkai, M. (2006): A globális klímaváltozás: hazai hatások és válaszok. – KvVM-MTA „VAHAVA” Projekt összefoglalása. Bevezetés. 5-7.
- [34] Laws, E. A. (1975): The importance of respiration losses in controlling the size distribution of marine phytoplankton. – *Ecology* 56: 419-426.
- [35] Mackas, D. L., Tsuda, A. (1999): Mesozooplankton in the eastern and western subarctic Pacific: community structure, seasonal life histories, and interannual variability. – *Progress in Oceanography* 43: 335-363.
- [36] Margalef, R. (1960): Temporal succession and spatial heterogeneity in phytoplankton. – In: BUZZATI-TRAVERSO, A. A. (ed.): *Perspectives in Marine Biology: 329-349*. Univ. Calif. Press., Berkeley and Los Angeles.
- [37] Meise-Munns, C., Green, J., Ingham, M., Mountain, D. (1990): Interannual variability in the copepod populations of George Bank and the western Gulf of Maine. – *Marine Ecology Progress Series* 65: 225-232.
- [38] Mouny, P., Dauvin, J. C. (2002): Environmental control of mesozooplankton community structure in the Seine estuary (English Channel). – *Oceanologica Acta* 25: 13-22.
- [39] Muskó, I.B., Balogh, Cs., Bakó, B., Leitold, H., Tóth, Á. (2004): Gerinctelen állatok szezonális dinamikája balatoni hínárosban, különös tekintettel néhány pontokáspi inváziós fajra. – *Hidrológiai Közlöny* 84: 12-13.

- [40] Müller, Z., Kiss, B., Horváth, R., Csabai, Z., Szállassy, N., Móra, A., Bárdosi, E., Dévai, Gy. (2001): Makroszkópikus gerinctelenek mennyiségi viszonyai a Tisza-tó apotai térségének hínár- és mocsárinövény-állományaiban. – *Hidrológiai Közöny* 81: 423-425.
- [41] Nauwerck, A. (1963): Die Beziehungen zwischen Zooplankton und Phytoplankton im See Erken. – *Symbolae Botanicae Uppsaliensis* 17: 1-163.
- [42] Nicolet, B., Briggs, J., Fox, G., Hodson, N. J., Reynolds, C., Whitfield, M., Williams, P. (2004): The wetland plant and macroinvertebrate assemblages of temporary ponds in England and Wales. – *Biological Conservation* 120: 261-278.
- [43] Padisák, J. (1985): A fitoplankton szukcessziója. – In: Fekete, G. (szerk.) *A cönológiai szukcesszió kérdései*. *Biológiai Tanulmányok* 12. Akadémiai Kiadó, Budapest, 83-119.
- [44] Padisák, J. (1993): The influence of different timescale disturbances on the species richness, diversity and equitability of phytoplankton in shallow lakes. – *Hydrobiologia* 249: 135-156.
- [45] Parsons, T. R., Takahashi, M. (1973): Environmental control of phytoplankton cell size. – *Limnol. Oceanogr.* 18: 511-515.
- [46] Parson, J.K. & Matthews, R.A. (1995): Analysis of the associations between macroinvertebrates and macrophytes in a freshwater pond. – *Northwest Science* 69: 265-275.
- [47] Ponyi, J., Tamás, G. (1964): Napszakos változások vizsgálata a Tihanyi Belső-tó fito- és zooplanktonján. – *Különlenyomat az Állattani Közlemények L.I 1-4. számából*: 105-122.
- [48] Ponyi, J., Biró, P., Zánkai, P. N., Oláh, J., Tamás, G., Csekei, T., Kiss, Gy., Morvai, T. (1974): Limnological investigations of a fish-pond supplied with sewage-water in the vicinity of Lake Balaton II. – *Annales Biologiques Tihany* 41: 235-288.
- [49] Ponyi, J., Horváth, J. N., Zánkai, N. P. (1975): Investigations on planktonic Crustacea in lake Balaton VI. Quantitative changes in the *Eudiaptomus gracilis* population at various regions of Lake Balaton. – *Annales Biologiques Tihany* 42: 203-218.
- [50] Puelles, M. L. F., Pinot, J. M., Valencia, J. (2003): Seasonal and interannual variability of zooplankton community in waters of Mallorca island (Balearic Sea, Western Mediterranean).- 1994-1999. – *Oceanologica Acta* 26: 673-686.
- [51] Rajczy, M., Padisák, J. (1983): DIVDROP analysis – a new method for the interpretation of species importance in diversity changes. – *Ann. Hist.-nat. Mus. Nat. Hung.* 75: 97-105.
- [52] Reynolds, C. S. (1980): Phytoplankton assemblages and their periodicity in stratifying lake systems. – *Holarctic Ecology* 3: 141-159.
- [53] Reynolds, C. S. (1982): Phytoplankton periodicity its motivation, mechanisms and manipulation. – *FBA Annual Report* 50: 60-75.
- [54] Richerson, P., Armstrong, R., Goldman, C. R. (1970): Contemporaneous disequilibrium, a new hypothesis to explain the „paradox of plankton”. – *Proc. Natl. Acad. Sci.* 67: 1710-1714.
- [55] Simona, M., Barbieri, A., Veronesi, M., Malusardi, S., Straskrabova, V. (1999): Seasonal dynamics of plankton in a mountain lake in the Southern Alps (Laghetto Inferiore, Switzerland). – *Journal of Limnology* 58(2): 169-178.
- [56] Sipkay, Cs., Hufnagel, L., Gaál, M. (2005): Zoocoenological state of microhabitats and its seasonal dynamics in an aquatic macroinvertebrate assembly. – *Applied Ecology and Environmental Research* 3(2): 107-137.
- [57] Sipkay, Cs., Hufnagel, L. (2006): Szezonális dinamikai folyamatok egy balatoni makrogerinctelen együttesben. – *Acta Biol. Debr. Oecol. Hung* 14: 211-222
- [58] Somlyódi, L., Herodek, S., Fisher, F. (1983): Eutrophication of shallow lakes: modeling and management. – IIASA, Laxenburg.
- [59] Sommer, U. (1989): *Plankton Ecology: Succession in Plankton Communities*. – Springer Verlag, New York.

- [60] Sommer, U., Z. M. Gliwicz, W. Lampert, A. Duncan. (1986): The PEG-model of seasonal succession of planktonic events in freshwaters. – *Archiv für Hydrobiologie* 106: 433-471.
- [61] Sommer, U., Padisák, J., Reynolds, C. S., Juhász-Nagy, P. (1993): Hutchinson's heritage: the diversity-disturbance relationship in phytoplankton. – *Hydrobiologia* 249: 1-8.
- [62] Sztító, A. (1998): Üledéklakó haltáplálék-szervezetek biomasszája és szezonális ingadozásai a Balaton különböző medencéiben. – *Halászat* 91: 74-82.
- [63] Tilman, D. (1982): Resource competition and community structure. – Princeton Univ. Press, Princeton.
- [64] Tilman, D., Kilham, S. S., Kilham, D. (1982): Phytoplankton community ecology: the role of limiting nutrients. – *Ann. Rev. Ecol. Syst.* 13: 349.
- [65] Utermöhl, H. (1958): Zur Vervollkommung der quantitativen Phytoplankton-Methodik. – *Mitt. Int. Ver. Limnol.* 9:1-38.
- [66] Varga-Haszonits, Z. (2003): Az éghajlatváltozás mezőgazdasági hatásának elemzése, éghajlati scenáriók. – „AGRO-21” Füzetek 31.sz.: 9-27.
- [67] Viitasalo, M., Vuorinen, I., Ranta, E., 1990. Changes in crustacean mesozooplankton and some environmental parameters in the Archipelago Sea (Northern Baltic) in 1976-1984. – *Ophelia* 31: 207-217.
- [68] Vollenweider, R. A. (1968): Scientific fundamentals of eutrophication of lakes and flowing waters, with particular reference to nitrogen and phosphorus as a factor in eutrophication. – OECD Report, Paris.
- [69] Vollenweider, R. A., Kerekes, J. (1982): The loading concept as a basis for controlling eutrophication philosophy and preliminary results on OECD programme on eutrophication. – *Progress in Water technology* 12: 5-38.
- [70] Vörös, L., Kiss, N. (1985): A fitoplankton szezonális periodicitása és annak összefüggése az eutrofizálódással. Irodalmi áttekintés és balatoni esettanulmány. – In: Fekete, G. (szerk.) A cönológiai szukcesszió kérdései. *Biológiai Tanulmányok* 12. Akadémiai Kiadó, Budapest, 121-134.
- [71] Wu, L., Culver, D. A. (1994): Daphnia population dynamics in Western Lake Erie: regulation by food limitation and yellow perch predation.-*Journal of Great Lakes* 20 (3): 537-545.
- [72] Zánkai, P. N., Ponyi, J. (1997): Nyíltvízi planktonrák-együttesek szerkezetének tér- és időbeli változása a Balaton két, trofitásban eltérő területén (Keszthelyi és Siófoki medence). – *Állattani Közlemények* 82: 87-108.