

MICROORGANISM VARIABILITY OF THE SOIL AND THE INHIBITION OF THE BANANA FUSARIUM WILT BY STRAW ADDITION COMBINED WITH FLOODING

FAN, P.[#] – CHENG, J.[#] – RUAN, Y.*

Hainan Key Laboratory for Sustainable Utilization of Tropical Bio-resources, College of Tropical Crops, Hainan University, Haikou 570228, PR China

[#]These authors contributed equally to this work

*Corresponding author

e-mail: ruanyunze1974@hainanu.edu.cn

(Received 18th Nov 2020; accepted 27th Jan 2021)

Abstract. Straw addition combined with flooding is a form of the Reductive Soil Disinfestation (RSD) which can effectively prevent soil-borne diseases to some extent. However, little is known about the continuous effects of straw addition combined with flooding on the key culturable microbes and the pathogen *Fusarium oxysporum* in soils susceptible to banana Fusarium wilt (BFW). We studied the effects of continuous cropping (CK), fallow (FW), flooding (RSD-FD) and straw addition combined with flooding (RSD-FS) treatments for 0-120 days on soil properties and the dominant culturable microorganisms. Compared to CK, RSD-FS treatment had the lowest incidence of BFW; RSD-FS treatments significantly increased soil pH, but soil Eh and the number of *Fusarium Oxysporum*, culturable bacteria and fungi decreased significantly after flooding (30 days). The bacteria genera *Agrobacterium*, *Enterobacter*, *Aeromonas*, and the fungal genera *Trichoderma*, *Penicillium* and *Myxoflagella* increased with the time of flooding; while the bacteria genera *Pseudoxanthomonas*, *Sphingomonas* and *Leckeria*, decreased first and then increased; Interestingly, the bacterial genera *Bacillus* and *Brevibacterium*, and the fungal genera *Phoma*, *Coprinus* and *Filamentous* could not be cultured after flooding (30 days). Therefore, RSD-FS treatment could change the microbial flora and increase the general inhibition of the highly susceptible banana soil.

Keywords: *Fusarium oxysporum*, reductive soil disinfestation, species composition, *Leckeria*, *Trichoderma*

Introduction

Bananas (*Musa nana* Lour) are the main source of food and income for many people in the tropics and subtropics (FAOSTAT, 2017). Today nearly 50% of the world's banana production is made up of the Cavendish (*Musa* Aaa) variety, which is susceptible to the current widespread pathogenic strain of *Fusarium oxysporum* f. sp. *tropical Race 4* (*Foc TR4*), which causes banana fusarium wilt that is threatening banana production worldwide (Mostert et al., 2017). There is no commercially effective way to control *Foc TR4* (Ploetz, 2015). Even though some *Foc TR4* resistant varieties such as *Goldfinger* and *Taiwanese GCTCV somaclones* (Hwang and Ko, 2004) have also been produced, their yields are nowhere near as high as that of the Cavendish variety, so continued large-scale production of bananas depends on agronomic management of the fusarium wilt disease.

Reductive Soil Disinfestation (RSD) was an effective method to suppress various types of soil-borne diseases in various crops (Messiha et al., 2007), that was interpreted to add a lot of easily decomposed organic materials, irrigation, film mulching or flooding to block gas exchange with the atmosphere, quickly creating strong reduction

environment of soil, killing soil-borne pathogens in a short period of time (Liu et al., 2019; Larkin and Griffin, 2007). Crop straw is rich in organic carbon and essential nutrient elements, which can promote soil organic matter accumulation, improve soil physical and chemical properties and increase soil fertility (Franzluebbers, 2002; Rasool et al., 2008; Surekha et al., 2003), which could make up for the shortcomings that flooding tends to promote soil erosion and degradation (Alkhaibari et al., 2018). It was also observed that the anaerobic soil formed by straw addition combined with flooding could drive microbial factors, improve soil microbial community and inactivate pathogens, thus inhibit the growth of *F. oxysporum* and prevent the occurrence of banana wilt (Wen et al., 2016). Previous studies have reported that combined flooding with 2% (w/w) maize (*Zea mays*) straw could significantly decrease the population of *F. oxysporum* and the relative abundances of fungi such as *Chaetomium spp.* and *Penicillium spp.*, but significantly increased pH and the relative abundances of bacteria belonging to the phylum Bacteroidetes, Acidobacteria and Planctomycetes, which that was beneficial to the disease suppression (Huang et al., 2015). Recent reports also studied the RSD effecting on cucumber damping-off diseased, and the result showed that the potential benefit species which were negatively correlated with disease incidence and positively associated with the change of the soil environment, such as bacterial order *Sphingobacteriales* and fungal order *Sordariales* was significantly increased and led to the soil more disease-suppressive and beneficial to the soil nutrient cycling and banana growth (Liu et al., 2019).

key microorganism's dynamic in a disease-suppressed banana soil and their potential relation to the soil-borne pathogens and soil environments during and after the straw addition combined with flooding remains are poorly understood. Therefore, we conducted a greenhouse pot experiment to identify the dynamic changes of the abundance of cultivable pathogen *F. oxysporum* and the dominant cultivable bacteria and fungus and microbial community, and their relationship with the RSD-soil properties from 0 to 120 days by straw addition combined with flooding to provide the theoretical guidance for the controlling of banana fusarium wilt.

Materials and Methods

Experimental design and soil

The soil was come from the banana fields which have continuously cropped for seven years, and the incidence of banana fusarium wilt was 50% higher. The basic properties of the soil were as follows: organic matter 10.98 g·kg⁻¹, alkali-hydrolyzed nitrogen 23.71 mg·kg⁻¹, available phosphorus 102.55 mg·kg⁻¹, available potassium 237.15 mg·kg⁻¹, pH 6.5, *F. oxysporum* count 2×10⁴ CFU·kg⁻¹. The greenhouse culture experiment was conducted from June 1, 2019, to December 27, 2019, in Ledong County, Hainan Province, China. The location was 18°42'N, 108°48'E. The experiment consisted of four treatments: continuous cropping (CK), fallow (FW), flooding (RSD-FS), straw addition combined with flooding (RSD-FS), 10 repetitions per treatments, and 5.5 kg of 2 mm sieved soil in each pot which is 23.5 cm diameter and 20 cm height, 110 g rice straw which crushed by micro-pulverize, after the rice straw and the soil were mixed and homogenized, the soil in the basin was kept smooth and filled with water until the soil was saturated. The test period was 120 days, and 30 days was the interval. The soil samples were collected 4 times, and the submergence depth of each treatment was 3 cm. After flooding, the next generation

banana was planted after the flooding over, and the incidence of banana fusarium wilt was calculated after 3 months. Before planting the next banana, 55 g bio-organic fertilizer was followed in each pot. The bio-organic fertilizer was acquired from Jiangsu Huarun Earth Fertilizer Co., Ltd. The banana variety is 'Brazil', which was provided by the experimental research base of Heat Science Academy of Danzhou Campus of Hainan University. Rice (Nanjing 2728 Yinnuo) Straw was taken in 2018 at the local rice fields.

Soil collection and properties

After removing the dead branches and leaves from the soil surface layer, 10 soil columns with a depth of 5-10 cm and a diameter of 2 cm were randomly collected with a soil drill, with the center of the pot plant circle as the center, mix the remaining soil into a sample. After homogenizing the soil samples, the samples were divided into three parts. One part of the soil was air-dried naturally, then the soil was sieved through 2 mm sieve to determine the physical and chemical properties of the soil, one part of the soil was stored in a 4 °C refrigerator for picking up single strains of soil. Soil pH and Eh was determined using a soil-to-water ratio of 1:2.5 (w/v). The exchangeable ammonia (NH₄⁺-N) and nitrate (NO₃⁻-N) in the soil was extracted with 2 M KCl (w/v, 1:5) and determined on a Continuous flow analyzer (Foss Tecator, Hillerød, Denmark).

Determination of the number of culturable microorganisms in soil

The number of *F. oxysporum*, bacteria, fungi and actinomycetes in the soil was determined by the plate dilution coating method (Ben-David and Davidson, 2014). The culturable *F. oxysporum* were counted using the improved Komada 2 medium at 28 °C for 96 h (Komada, 1975). The bacteria were cultured in Luria-Bertani (LB) medium at 30 °C for 24 h (Macwilliams and Liao, 2006), and the fungi were cultured in Martin medium at 28 °C for 72 h (Martin, 1981), the number expressed as colony forming unit (CFU) per gram of dry soil.

Isolation and identification of culturable bacteria and fungi

Isolation of single bacterial strain from microbial community using LB medium. Martin medium is used to isolate individual fungal strains from the microbial community. According to the manufacturer's instructions, single-strain DNA is extracted from the purified culture using a bacterial Genomic DNA Extraction Kit (DP302) (Tiangen biotech (Beijing) Co., Ltd.) and Fungi Genomic DNA Extraction Kit Fungal genomic (D2300) (Beijing Suolaibao Technology Co., Ltd.). The primer pair 27F(5'-AGAGTTT-GATCCTGGCTCAG-3') and 1492R(5'-GGTTACCTTGTTACGACTT-3') was selected to amplify the 16S rRNA gene (Yu et al., 2013). The primer pair ITS1(5'-TCCGTAGGTGAACCTGCGG-3') and ITS4(5'-TCCTCCGCTTATTGATATGC-3') were used for the fungal ITS1 gene (Schoch et al., 2012) 18. We established a 50-µl of reaction solution including 25 µl of TaKaRa Ex Taq® Premix (Takara Bio Inc., Japan), 0.5 µl of each primer (10 µM), 4 µl of template DNA, and 20 µl of sterile water. Cycling conditions were as follows: 95 °C for 10 min polymerase activation, followed by 45 cycles of denaturation at 95 °C for 30 s, annealing at 55 °C (bacteria) and 50 °C (fungi) for 45 s, and extension at 72 °C for 60 s used the Bio-Rad Bole PCR T100. The purified PCR product was analyzed with the Illumina MiSeq platform at Personal Biotechnology Co., Ltd. (Shanghai, China).

Taxonomy assignment was performed using BLASTP (Version 2.2.28+, <http://blast.ncbi.nlm.nih.gov/Blast.cgi>) by aligning non-redundant gene catalogs against NCBI database (Altschul et al., 1997).

Statistical analysis

The test data was processed and plotted with Microsoft Excel 2016. Variance analysis and Pearson correlation analysis were carried out with SPSS 20.0 (IBM Corporation, USA). Multiple comparisons were conducted with Least-significant-difference (LSD) at a $p = 0.05$ level.

Results

Soil properties and *Fusarium* wilt disease influenced by straw addition combined with flooding

RSD-FS treatment (straw addition combined with flooding) significantly affected soil Eh, ammonium and nitrate contents ($p < 0.01$) (Table A1). Compared with CK treatment and FW treatment, soil Eh and ammonium in soil treated with RSD-FD and RSD-FS significantly decreased after the 30th day of flooding, while the soil nitrate and pH significantly increased, after that, the trend gradually eased with the extension of flooding time ($p < 0.05$) (Fig. 1). Pearson correlation showed that flooding duration was positively correlated with soil pH and ammonium content, but negatively correlated with Eh and nitrate nitrogen content by the RSD-FS treatment ($p < 0.01$) (Table 1).

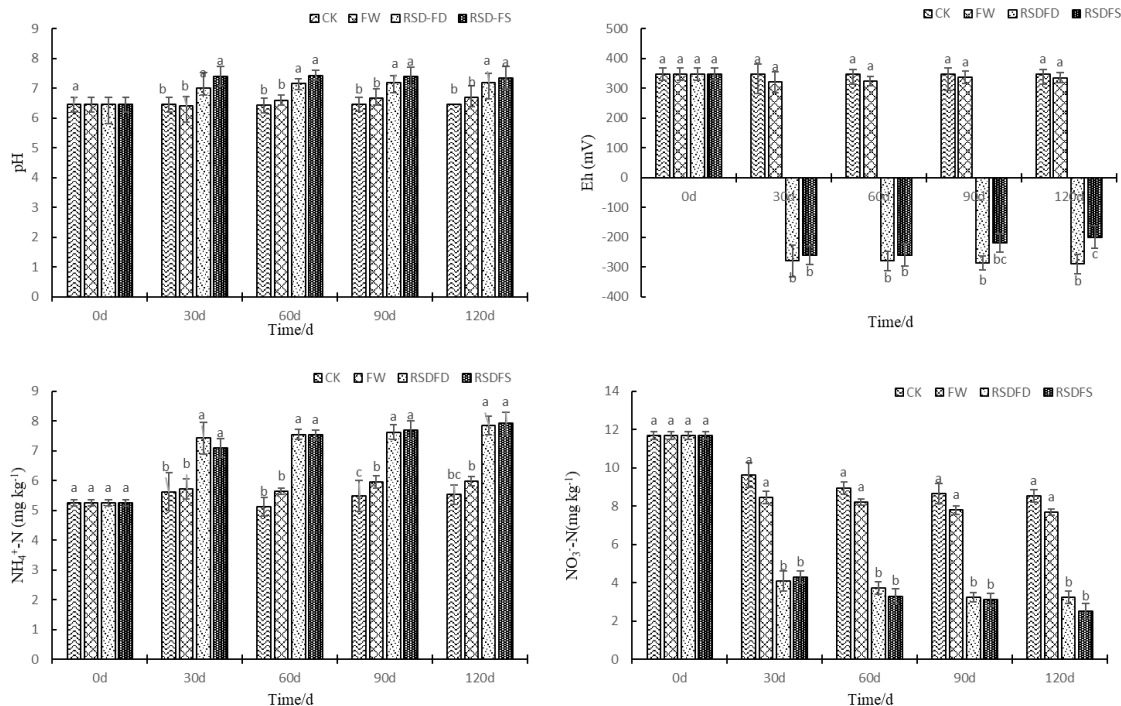


Figure 1. Effects of straw addition combined with flooding on soil Eh, pH, ammonium and nitrate contents. CK: continuous cropping; FW: Fallow; RSD-FD: Flooding; RSD-FS: Flooding + Straw. Error bars indicate standard error ($n = 3$). Different small letters indicate a significant difference among treatments at the 0.05 level

In addition, CK treatment has the highest incidence of banana fusarium wilt (BFW), and followed by FW treatment (Fig. 2). Compared with CK and FW treatments the incidence of BFW with RSD-FD and RSD-FS was significantly lower ($p < 0.05$), 50% and 37.5% lower than CK, respectively.

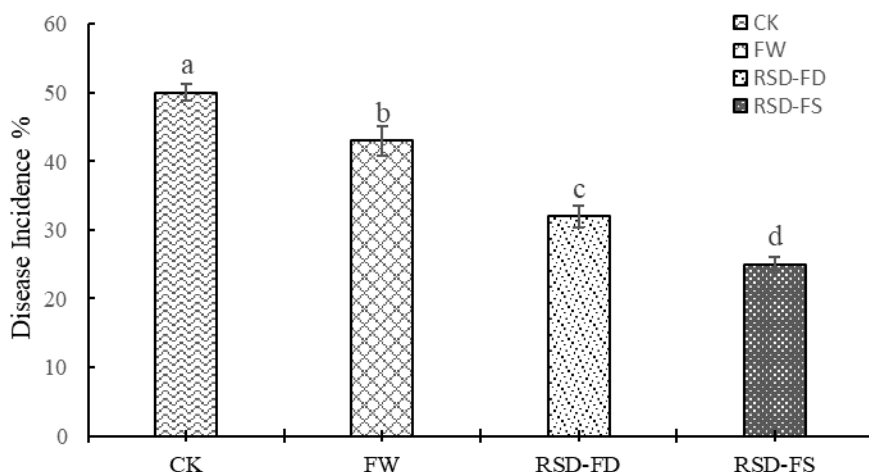


Figure 2. Incidence of banana *Fusarium* wilt of the next generation banana after flooding. CK: continuous cropping; FW: Fallow; RSD-FD: Flooding; RSD-FS: Flooding + Straw. Error bars indicate standard error ($n = 3$). Different small letters indicate a significant difference among treatments at the 0.05 level

The number of culturable microorganisms under straw addition combined with flooding

Both fallow and flooding could significantly reduce the number of soil *F. oxysporum*. Moreover, the number of soil *F. oxysporum* flooding treatments (RSD-FD and RSD-FS) was significantly lower than fallow treatments and became stable after (90 days) ($p < 0.05$). However, both of RSD-FD and RSD-FS treatments was significantly lower after the 30th day than other treatments and lasted until the 120th day. On the 90th day, FW, RSD-FD, and RSD-FS treatments significantly decreased than CK treatment 18.33%, 60% and 62.25% ($p < 0.05$), respectively. RSD-FS treatment significantly decreased to 4.2×10^3 CFU g^{-1} (dry soil). The results of variance analysis showed that straw addition combined with flooding significantly affected the number of *F. oxysporum* ($F = 3238.1$, $p < 0.01$) (Table A1), and the Pearson correlation analysis showed that the number of *F. oxysporum* decreased with the increase of flooding time ($p < 0.01$) (Table 1).

Compared with CK treatment, the number of culturable bacteria after 60 days was significantly lower under other treatments (Fig. 3b) ($p < 0.05$), and all treatments tended to stabilize to the 120th day. In general, the number of bacteria in soil under RSD-FS treatment was the lowest, followed by RSD-FD and FW treatment.

There was no significant change in the number of culturable fungi in CK and FW treatments. Compared with CK and FW treatment, the number of culturable fungi in the soil under flooding treatment (RSD-FD and RSD-FS) after the 30th day was significantly reduced, while the number of culturable fungi was the lowest after flooding to the 60th day, the culturable fungi in RSD-FD and RSD-FS treatments were 46.84% and 17.72% of the control, respectively, and tended to stabilize to 120th day (Fig. 3c) ($p < 0.05$). The results of

variance analysis showed that Straw addition combined with flooding significantly affected the number of culturable bacteria ($F = 351.49$, $p < 0.01$) and the number of culturable fungi ($F = 244.72$, $p < 0.01$) (Table A1), and the correlation analysis shows that both of them decrease with the increase of flooding time (Table 1) ($p < 0.05$).

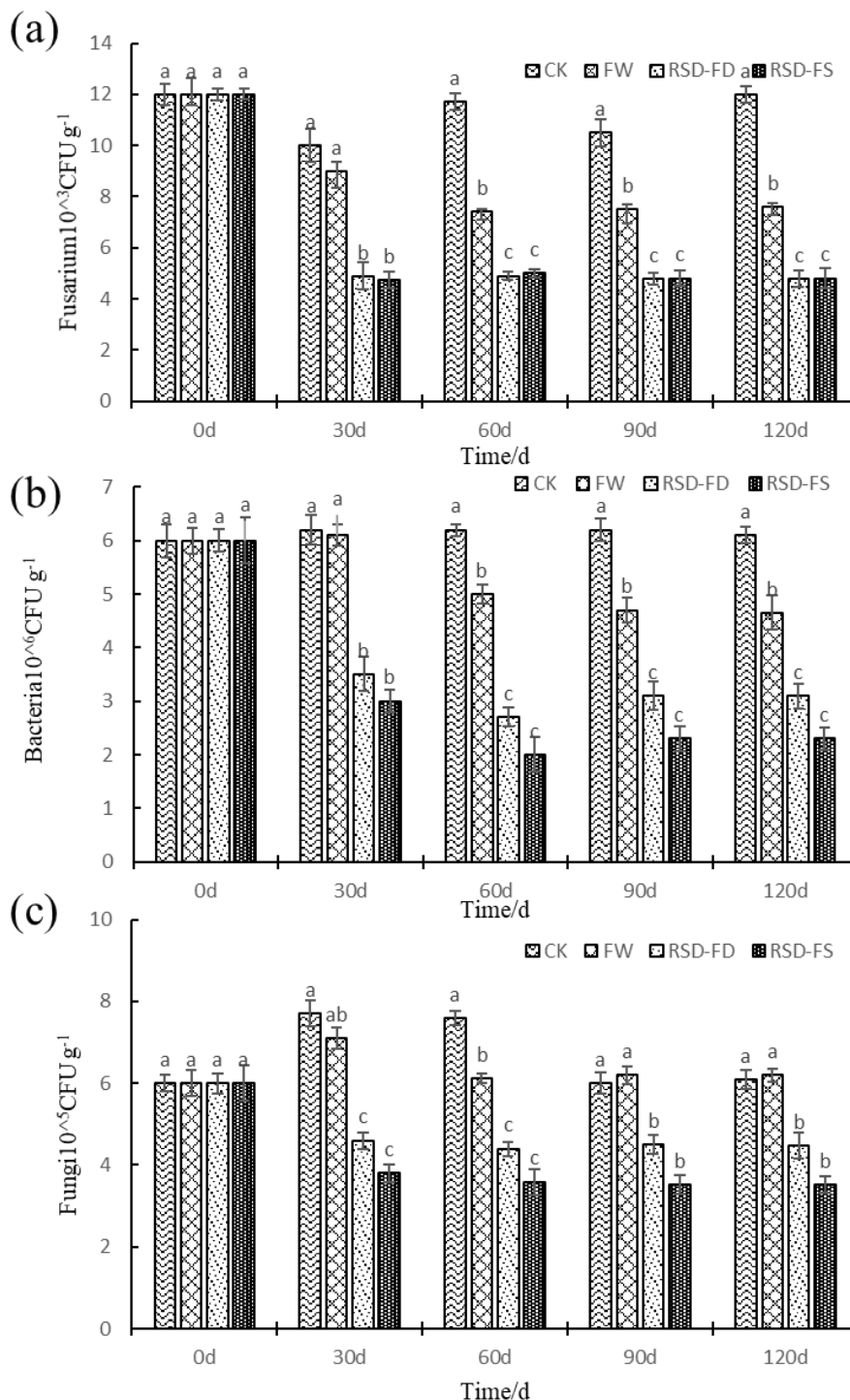


Figure 3. Effects of straw addition combined with flooding on the number of *F. oxysporum* (a), bacteria (b) and fungi (c). CK: continuous cropping; FW: Fallow; RSD-FD: Flooding; RSD-FS: Flooding + Straw. Error bars indicate standard error ($n = 3$). Different small letters indicate a significant difference among treatments at the 0.05 level. CFU, colony forming unit

Table 1. Pearson correlation analysis of investigation parameters

	Time	pH	Eh	NH ₄ ⁺ —N	NO ₃ ⁻ —N	<i>F. oxysporum</i> CFU
Time	—	0.68**	-0.59	0.87**	-0.81**	-0.71**
<i>F. oxysporum</i> CFU	-0.71**	-0.99**	0.87**	-0.96**	0.98**	—
Bacteria CFU	-0.78**	-0.97**	0.79**	-0.98**	0.99**	0.97**
Fungus CFU	-0.74**	-0.99**	0.84**	-0.97**	0.99**	0.99**
Bacterial genera						
<i>Bacillus</i>	-0.71**	-0.99**	0.86**	-0.96**	0.99**	1.00**
<i>Lysine Bacillus</i>	-0.89**	—	—	—	0.57*	0.48
<i>Pseudoxanthomonas</i>	0.69**	—	—	—	—	0.01
<i>Oligomonas</i>	-0.95**	-0.83**	0.67**	-0.96**	0.92**	0.84**
<i>Sphingomonas</i>	0.61**	—	—	—	—	—
<i>Agrobacterium</i>	—	—	—	—	—	—
<i>Leckeria</i>	0.84**	—	—	—	—	—
<i>Enterobacter</i>	0.38	0.92**	-0.80**	0.78**	-0.85**	-0.92**
<i>Aeromonas</i>	-0.75**	-0.16	—	—	0.34**	0.17**
<i>Brevibacterium</i>	-0.71**	-0.99**	0.86**	-0.96**	0.99**	1.00**
Fungal genus						
<i>Aspegillus</i>	-0.99**	-0.72**	0.61	-0.89**	0.84**	0.74**
<i>Trichoderma</i>	0.81**	0.97**	-0.86**	0.99**	-1.00**	-0.99**
<i>Penicillium</i>	0.98**	0.79**	-0.65**	0.93**	-0.89**	-0.80**
<i>Penicillium</i>	0.89**	0.94**	-0.80**	1.00**	-0.99**	-0.95**
<i>Fusarium</i>	-0.78**	-0.97**	0.85**	-0.98**	0.99**	0.99**
<i>Myxoflagella</i>	0.97**	0.82**	-0.67**	0.95**	-0.91**	-0.83**
<i>Trametes</i>	0.97**	0.68**	-0.52*	0.86**	-0.80**	-0.68**
<i>Phoma</i>	-0.71**	-0.99**	0.86**	-0.96**	0.99**	1.00**
<i>Coprinus</i>	-0.71**	-0.99**	0.86**	-0.96**	0.99**	1.00**
<i>Filamentous</i>	-0.71**	-0.99**	0.86**	-0.96**	0.99**	1.00**

Time: the day of flooding; * and ** were significantly correlated at 0.05 and 0.01 levels, respectively

Changes in the dominant soil culturable microorganisms by straw addition combined with flooding

A total of 298 strains of bacteria and 376 strains of fungi were screened and identified. The bacteria belong to 4 phyla 7 classes, 12 orders, 22 families, 22 genera, and the fungi belong to 2 phyla, 3 classes, 7 orders, 15 families and 17 genera. After flooding 120 days, the total number of bacteria and fungi were 216 and 245 respectively, and the total number of bacteria and fungi decreased by 82 and 131 respectively, compared to unflood (Tables A2 and A3).

RSD-FS treatment had obvious changes of soil culturable microorganisms (Fig. 4). For bacteria genera, *Bacillus* and *Brevibacterium* could not be cultivated after flooding 30 days; lysine *Bacillus* finally dying out after flooding 90 days; The genus *pseudoxanthomonas* decreased at first and then increased after flooding 60-120 days; The *Agrobacterium* increased first and then decreased, and decreased slowly after

60 days; The *Leckeria* showed a trend of decreasing first and then increasing, and the increase was gradually slowed down from flooding 60 to 120 day; *Enterobacter* had a tendency of increasing first and then decreasing, and the decreasing range became larger gradually after 60 days of flooding. The *Aeromonas* increased first and then decreased, and decreased gradually after 60 days of flooding (Fig. 4a).

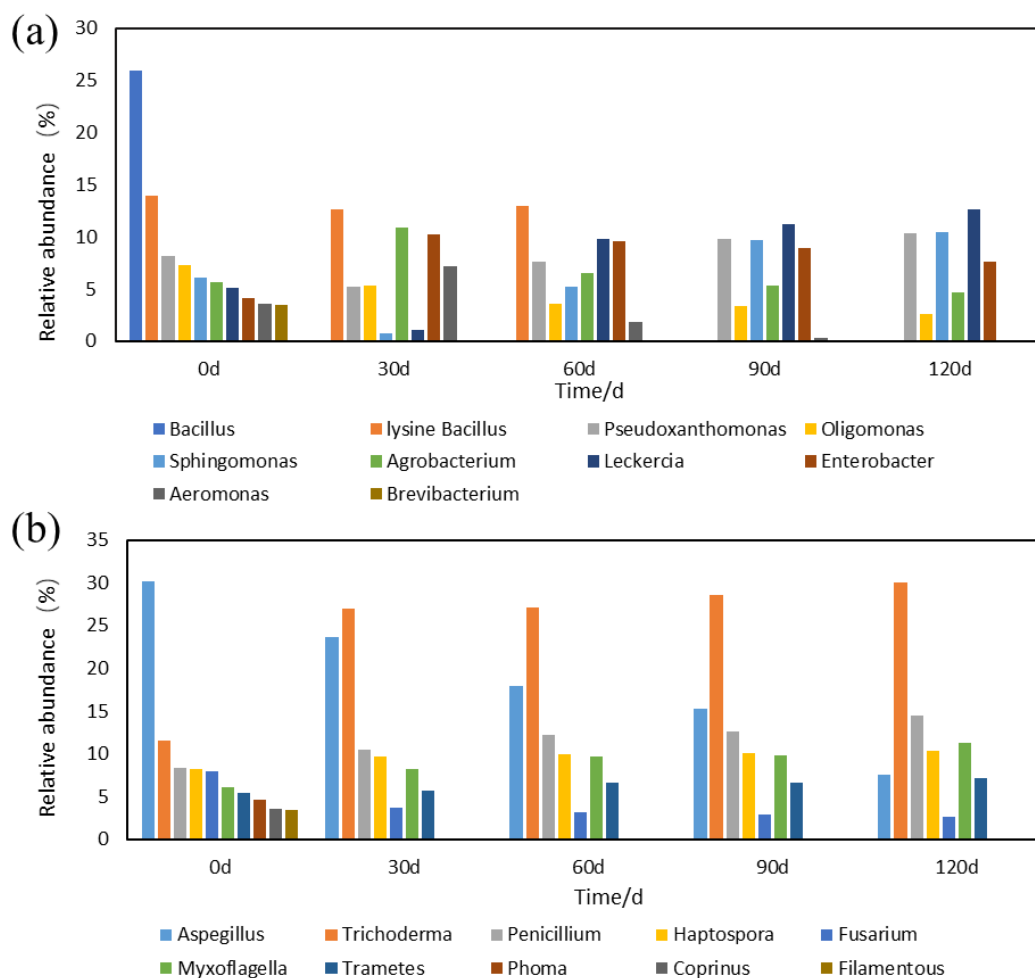


Figure 4. TOP10 cultivable bacterial (a) and (b) fungal genera dynamic changes in flooded soil with straw addition

The dominant fungi of *Phoma*, *Coprinus* and *Filamentous* could not be cultured after flooding 30 days; The relative abundance of *Aspegillus* before flooding was the highest, which decreased by 7.61% at 120 days after flooding; The relative abundance of *Trichoderma* showed a continuous increasing trend, and the maximum increase was 15.45% at 30 days after flooding; The relative abundance of *Penicillium* showed an increasing trend, and the maximum increase was 2.2% after 30 days of flooding. The *Fusarium* abundance showed a decreasing trend, the biggest decrease was 0.5% after 60 days of flooding. The *Myxoflagella* abundance showed an increasing trend, and the maximum increase was 2.08% after 30 days of flooding; The *Trametes* abundance showed an increasing trend, and the maximum increase was 0.88% after 60 days of flooding (Fig. 4b).

Relationship between Fusarium oxysporum and dominant microorganisms and soil properties after RSD-FS treatment

The number of soils *F. oxysporum* was negatively correlated with soil pH and ammonium ($p < 0.01$), but positively correlated with soil Eh and nitrate. In addition, there was a significant correlation between the number of *F. oxysporum* and the number of the dominant culturable bacteria and fungi in the soil. Such as, the dominant bacterial genera including of *Bacillus*, *Stenotrophomonas*, *Aeromonas*, *Brevibacterium*, and the dominant genera *Aspergillus*, *Fusarium*, *Phoma*, *Coprinus* and *Filamentous*, there was a significant positive correlation between the number of cultural *F. oxysporum* ($p < 0.01$), this indicated that these microflora might be the potential harmful microorganisms; However, there was a significant negative correlation between the number of *Enterobacter*, *Trichoderma*, *Penicillium*, *Myxosporea*, *Trametes* and the number of *F. oxysporum* ($p < 0.01$), and these genera groups might be potential beneficial microorganisms. Besides *Enterobacter*, flooding time was significantly correlated with other dominant bacteria and fungi ($p < 0.01$), while soil pH, Eh, the contents of ammonium and nitrate were almost correlated with the potential beneficial and harmful microorganisms ($p < 0.01$) (Table 1).

Discussion

Our results provided evidence that straw addition combined with flooding could reduce the incidence of banana fusarium wilt effectively, and change the biological and abiotic characteristics of the susceptible soil. And this pattern is consistent with previously reported that the Reductive Soil Disinfestation (RED) method in preventing soilborne diseases (Liu et al., 2019; Huang et al., 2015)

It is well known that there is a direct positive correlation between the number of soil pathogen *F. oxysporum* and the severity of the disease (Shen et al., 2014, 2019). With or without Straw, flooding for 30 days significantly reduced the number of *F. oxysporum*, and the trend remained the same after 30 days until 120 days (Fig. 1). This suggests that flooding measures played a relatively more important role, and could be interpreted as providing unfavorable conditions for the growth of *F. oxysporum* (Huang et al., 2015). Straw returning as potential fertility of soil, can provide carbon and nitrogen sources for soil microorganisms in the process of flooding (Dong et al., 2018). However, it was found that the shredded straw could form larger pore structure in a waterlogged environment, which provided living space for fungal chlamydospores (Jang et al., 2018). It suggested that straw addition might be beneficial to the survival of pathogens. Previous studies have shown that an increase in bacteria or fungi diversity contributes to a decrease in *F. oxysporum* (Wang et al., 2015). This could be explained by an increase in bacterial diversity that reinforces the general inhibition, expands the array of nutrient acquisition strategies, and increases the likelihood of a strong competitor to the *F. oxysporum*. Although the flooding measures in this study reduced the number and diversity of culturable bacteria and fungi in the soil, the reduction in the number of *F. oxysporum* was even greater, the results showed that the possible negative effects of flooding and Straw addition could be offset by the effect of disease control. It should be noted that fallow is ineffective because the *F. oxysporum* usually persists in the soil for more than 20 years (Stotzky and Torrence Martin, 1963). Although fallow can also reduce the number and incidence of *F. oxysporum* but the effect of fallow is far less than that of flooding.

The importance of microbial populations for disease suppression has been demonstrated by the loss of support in soil sterilization (Noble and Coventry, 2005). Microbes which occupy most part of farmland soil is more likely to participate in environmental activities, and to some extent affect the distribution of soil microbes, but the mechanism is still unknown. Before the treatment of fallow, the dominant bacterial genera were *Bacillus*, *Pseudoxanthomonas*, *Sphingomonas* and *Agrobacterium*. This result was consistent with that of (Yang et al., 2020). At the same time, *Penicillium* and *Aspergillus* are the most dominant species in the fungal community, and *Fusarium* was abundant, which are basically consistent with the previous results (Lee and Kim, 2020). Our results showed that the structure of soil microbial community under straw addition combined with flooding treatment changed significantly, *Leckeria*s replaced *Bacillus* to become the new dominant bacteria genus; *Trichoderma* replaced *Aspergillus* to become the new dominant fungal genus. The largely application of *Trichoderma* strains with biocontrol and plant growth-promoting capacities that highly suppressed the pathogen *F. oxysporum* (Bunbury-Blanchette and Walker, 2019; Martínez-Medina et al., 2014; Xiong et al., 2017). For example, *Trichoderma* strains can take advantage of limited living space to grow and reproduce quickly and capture water and nutrients (López-Mondéjar and Pascual, 2011), also can secrete a few bacteriostatic chemical substances to wait (Saravanakumar et al., 2016). Lee and Kim (2020) pointed out that the *Leckeria* genus has a strong survival ability in harsh environment, and was insensitive to environmental changes, so it is more suitable than aerobic microorganisms in the application of the promotion. It is suggested that the inhibition of straw addition combined with flooding may be explained as, *Trichoderma spp.* and *Leckeria spp.* may be able to compete for space and nutrients in the presence of limited resources, these two dominant groups will play a great role in the biocontrol of *F. oxysporum* in the future.

The modification of soil physical and chemical characteristics plays an important role in control of banana Fusarium wilt (Hong et al., 2020). Many previous studies reported that the severity of banana Fusarium wilt was negatively correlated with soil pH (Shen et al., 2014, 2019), and the which was consistent with the results of this study and other result that significantly increased the pH level by reductive soil disinfestation (Huang et al., 2015; Liu et al., 2016). Soil pH changes with the input of material (carbon source, nitrogen source, etc.), and affects other abiotic and biological properties of the soil (Brady and Weil, 2004). For example, soil pH directly affects soil nutrient availability, especially for oxidation and reduction sensitive micronutrient (Dhungana and Crumbliss, 2005); pH is strongly positively correlated with bacterial diversity and abundance. Bacterial diversity can double between pH 4 and 8 (Rousk et al., 2010) 38. While many studies have shown the effect of pH on *F. oxysporum*, our understanding of this relationship is still incomplete. For each combination of soil conditions and management systems, it is assumed that there is an optimal pH for plant growth and disease suppression. The relationship between pH and inhibition needs to be studied in the field to better understand these complex interactions. Interestingly, we found that no matter whether straw was added or not, the nitrate content decreased with the increase of flooding time, while the ammonium decreased. This may be related to the enhancement of nitrate uptake in banana by flooding or the inhibition of nitrification in flooded and anoxic environment. In addition, the correlation analysis further indicated that soil pH, Eh, ammonium and nitrate content might be the key physical and chemical factors impact the potential beneficial and harmful microbe associated with *F. oxysporum* (Table 1).

Conclusions

The incidence of banana fusarium wilt by straw-adding combined with flooding was significantly lower than that by single flooding and other non-flooding treatments (continuous cropping and fallow). Flooding and Straw addition method significantly reduced the amount of the pathogen *F. oxysporum*, culturable bacteria and fungi in the soil. It also increased the soil pH and reduced Eh and nitrate nitrogen levels after straw-adding combined flooding. A remarkable shift has happened in microbial community by the straw-adding combined flooding. When the flooding was done, the key genus *Leckeria* took the place of the genus *Bacillus*, and the key genus *Trichoderma* took the place of the genus *Aspergillus*. Further studies (e.g., secreted antagonists) on the interactions of these two dominant species with pathogens will be needed. To sum up, the measures of flooding combined with straw addition can just offset the shortage of a single measure, which makes the banana fusarium wilt prevention and control achieve optimistic results.

Acknowledgements. This research was financially supported by National Natural Science Foundation of China (31672239), National Key Basic Research Program of China (2015CB150503).

REFERENCES

- [1] Alkhaibari, A. M., Maffei, T., Bull, J. C., Butt, T. M. (2018): Combined use of the entomopathogenic fungus, *Metarhizium brunneum*, and the mosquito predator, *Toxorhynchites brevipalpis*, for control of mosquito larvae: is this a risky biocontrol strategy? – *Journal of Invertebrate Pathology* 153: 38-50.
- [2] Altschul, S. F., Madden, T. L., Schäffer, A. A., Zhang, J., Zhang, Z., Miller, W., Lipman, D. J. (1997): Gapped BLAST and PSI-BLAST: a new generation of protein database search programs. – *Nucleic Acids Research* 25(17): 3389-3402.
- [3] Ben-David, A., Davidson, C. E. (2014): Estimation method for serial dilution experiments. – *Journal of Microbiological Methods* 107: 214-221.
- [4] Brady, N. C., Weil, R. R. (2004): *Elements of the Nature and Properties of Soils*. – *Journal of Microbiological Methods* 278.
- [5] Bunbury-Blanchette, A. L., Walker, A. K. (2019): *Trichoderma* species show biocontrol potential in dual culture and greenhouse bioassays against *Fusarium* basal rot of onion. – *Biological Control* 130: 127-135.
- [6] Dhungana, S., Crumbliss, A. L. (2005): Coordination chemistry and redox processes in siderophore-mediated iron transport. – *Geomicrobiology Journal* 22(3-4): 87-98.
- [7] Dong, L., Linghu, W., Zhao, D., Mou, Y., Hu, B., Asiri, Abdullah, M., Alamry, K. A., Xu, D. (2018): Performance of biochar derived from rice straw for removal of Ni (II) in batch experiments. – *Water Science and Technology* 77: 824-834.
- [8] Food and Agriculture Organization of the United Nations (FAOSTAT) (2017): Data of crop production (2016-12-08) [2017-04-02]. – <http://www.fao.org/faostat/en/#data/QC>.
- [9] Franzluebbers, A. J. (2002): Soil organic matter stratification ratio as an indicator of soil quality. – *Soil and Tillage Research* 66(2): 95-106.
- [10] Hong, S., Jv, H., Lu, M., Wang, B., Zhao, Y., Ruan, Y. (2020): Significant decline in banana *Fusarium* wilt disease is associated with soil microbiome reconstruction under chilli pepper-banana rotation. – *European Journal of Soil Biology* 97: 103154.
- [11] Huang, X., Liu, L., Wen, T., Zhu, R., Zhang, J., Cai, Z. (2015): Illumina MiSeq investigations on the changes of microbial community in the *Fusarium oxysporum* f. sp.

- cubense infected soil during and after reductive soil disinfestation. – *Microbiological Research* 181: 33-42.
- [12] Hwang, S. C., Ko, W. H. (2004): Cavendish banana cultivars resistant to fusarium wilt acquired through somaclonal variation in Taiwan. – *Plant Disease* 88(6): 580-588.
- [13] Jang, J., Mirana, W., Divine, S. D., Nawaz, M., Shahzad, A., Woo, S. H., Lee, D. S. (2018): Rice straw-based biochar beads for the removal of radioactive strontium from aqueous solution. – *Science of the Total Environment* 615: 698-707.
- [14] Komada, H. (1975): Development of a selective medium for quantitative isolation of *Fusarium oxysporum* from natural soil. – *Review of Plant Protection Research* 8: 114-124.
- [15] Larkin, R. P., Griffin, T. S. (2007): Control of soilborne potato diseases using Brassica green manures. – *Crop Protection* 6: 1067-1077.
- [16] Lee, H., Ahmad, R., Kim, J. (2020): Alginate to simulate biofouling in submerged fluidized ceramic membrane reactor: effect of solution pH and ionic strength. – *Bioresource Technology* 302: 122813.
- [17] Liu, L., Kong, J., Cui, H., Zhang, J., Wang, F., Cai, Z., Huang, X. (2016): Relationships of decomposability and C/N ratio in different types of organic matter with suppression of *Fusarium oxysporum* and microbial communities during reductive soil disinfestation. – *Biological Control* 101: 103-113.
- [18] Liu, L., Huang, X., Zhao, J., Zhang, J., Caia, Z. (2019): Characterizing the key agents in a disease-suppressed soil managed by reductive soil disinfestation. – *Applied and Environmental Microbiology* 85(7): e02992-18.
- [19] López-Mondéjar, R., Ros, M., Pascual, J. A. (2011): Mycoparasitism-related genes expression of *Trichoderma harzianum* isolates to evaluate their efficacy as biological control agent. – *Biological Control* 56(1): 59-66.
- [20] Macwilliams, M. P., Liao, M.-K. (2006): Luria Broth (LB) and Luria Agar (LA) Media and Their Uses Protocol. – American Society for Microbiology, Washington, DC.
- [21] Martin, G. R. (1981): Isolation of a pluripotent cell line from early mouse embryos cultured in medium conditioned by teratocarcinoma stem cells. – *Proceedings of the National Academy of Sciences of the United States of America* 78(12): 7634-7638.
- [22] Martínez-Medina, A., Del Mar Alguacil, M., Pascual, J. A., Van Wees, S. C. M. (2014): Phytohormone profiles induced by trichoderma isolates correspond with their biocontrol and plant growth-promoting activity on melon plants. – *Journal of Chemical Ecology* 40(7): 804-15.
- [23] Messiha, N. A. S., Van Diepeningen, A. D., Wenneker, M., Van Beuningen, A. R., Janse, J. D., Coenen, T. G. C., Termorshuizen, A. J., Van Bruggen, A. H. C., Blok, W. J. (2007): Biological Soil Disinfestation (BSD), a new control method for potato brown rot, caused by *Ralstonia solanacearum* race 3 biovar 2. – *European Journal of Plant Pathology* 177(4): 403-415.
- [24] Mostert, D., Molina, A. B., Daniells, J., Fourie, G., Hermanto, C., Chao, C. P., Fabregar, E., Sinohin, V. G., Masdek, N., Thangavelu, R., Li, C., Yi, G., Mostert, L., Viljoen, A. (2017): The distribution and host range of the banana Fusarium wilt fungus, *Fusarium oxysporum* f. sp. cubense, in Asia. – *Plos one* 12(7): e0181630.
- [25] Noble, R., Coventry, E. (2005): Suppression of soil-borne plant diseases with composts: a review. – *Biocontrol Science and Technology* 15(1): 3-20.
- [26] Ploetz, R. C. (2015): Management of Fusarium wilt of banana: a review with special reference to tropical race 4. – *Crop Protection* 73: 7-15.
- [27] Rasool, R., Kukal, S. S., Hira, G. S. (2008): Soil organic carbon and physical properties as affected by long-term application of FYM and inorganic fertilizers in maize-wheat system. – *Soil and Tillage Research* 101: 31-36.
- [28] Rousk, J., Bååth, E., Brookes, P. C., Lauber, C. L., Lozupone, C., Caporaso, J. G., Knight, R., Fierer, N. (2010): Soil bacterial and fungal communities across a pH gradient in an arable soil. – *ISME Journal* 4: 1340-1351.

- [29] Saravanakumar, K., Yu, C., Dou, K., Wang, M., Li, Y., Chen, J. (2016): Synergistic effect of Trichoderma-derived antifungal metabolites and cell wall degrading enzymes on enhanced biocontrol of *Fusarium oxysporum* f. sp. *cucumerinum*. – *Biological Control* 94: 37-46.
- [30] Schoch, C. L. et al. (2012): Nuclear ribosomal internal transcribed spacer (ITS) region as a universal DNA barcode marker for Fungi. – *Proceedings of the National Academy of Sciences of the United States of America* 109: 6241-6246.
- [31] Shen, Z., Wang, D., Ruan, Y., Xue, C., Zhang, J., Li, R., Shen, Q. (2014): Deep 16S rRNA pyrosequencing reveals a bacterial community associated with banana *Fusarium* wilt disease suppression induced by bio-organic fertilizer application. – *PLoS One* 9(5): 1-10.
- [32] Shen, Z., Xue, C., Penton, C. R., Thomashow, L. S., Zhang, N., Wang, B., Ruan, Y., Li, R., Shen, Q. (2019): Suppression of banana Panama disease induced by soil microbiome reconstruction through an integrated agricultural strategy. – *Soil Biology and Biochemistry* 128: 164-174.
- [33] Stotzky, G., Torrence Martin, R. (1963): Soil mineralogy in relation to the spread of fusarium wilt of banana in central America. – *Plant and Soil* 18(3): 317-337.
- [34] Surekha, K., Padma Kumari, A. P., Narayana Reddy, M., Satyanarayana, K., Sta Cruz, P. C. (2003): Crop residue management to sustain soil fertility and irrigated rice yields. – *Nutrient Cycling in Agroecosystems* 67(2): 145-154.
- [35] Wang, B., Li, R., Ruan, Y., Ou, Ya., Zhao, Y., Shen, Q. (2015): Pineapple-banana rotation reduced the amount of *Fusarium oxysporum* more than maize-banana rotation mainly through modulating fungal communities. – *Soil Biology and Biochemistry* 86: 77-86.
- [36] Wen, T., Huang, X., Zhang, J., Cai, Z. (2016): Effects of biological soil disinfection and water regime on suppressing *Artemisia selengensis* root rot pathogens. – *Journal of Soils and Sediments* 16(1): 215-225.
- [37] Xiong, W., Guo, S., Jousset, A., Zhao, Q., Wu, H., Li, R., Kowalchuk, G. A., Shen, Qi. (2017): Bio-fertilizer application induces soil suppressiveness against *Fusarium* wilt disease by reshaping the soil microbiome. – *Soil Biology and Biochemistry* 114: 238-247.
- [38] Yang, F., Huai, W. X., Zeng, Y. H. (2020): New dynamic two-layer model for predicting depth-averaged velocity in open channel flows with rigid submerged canopies of different densities. – *Advances in Water Resources* 138: 103553.
- [39] Yu, J., Zhou, X. F., Yang, S. J., Liu, W. H., Hu, X. F. (2013): Design and application of specific 16S rDNA-targeted primers for assessing endophytic diversity in *Dendrobium officinale* using nested PCR-DGGE. – *Applied Microbiology and Biotechnology* 97(22): 9825-9836.

APPENDIX

Table A1. Analysis of variance of investigated parameters

	Treatment	Time	Treatment × Time
pH	3.58*	1.55	1.17
Eh	30.86**	14.75**	5.07**
NH ₄ ⁺ —N	69.75**	30.31**	2.45*
NO ₃ ⁻ —N	76874.4**	51949.2**	3394.23**
F. oxysporum CFU	25745.2**	29635.3**	3238.1**
Bacteria CFU	5471.78**	1509.1**	351.49**
Fungus CFU	1585.98**	259.5**	244.72**

* and ** were significantly different at 0.05 and 0.01 levels, respectively

Table A2. *Changes of bacterial population during flooding cycle*

Time (d)	Total number	Phyla	Classes	Orders	Families	Genera
0	298	4	7	12	15	22
30	223	2	4	6	10	12
60	218	2	4	6	10	11
90	201	2	4	6	10	11
120	216	2	4	6	10	10

Table A3. *changes of fungal population during flooding cycle*

Time (d)	Total number	Phyla	Classes	Orders	Families	Genera
0	376	2	3	7	15	17
30	266	1	2	4	7	9
60	215	1	2	4	7	9
90	265	1	2	4	7	9
120	245	1	2	4	7	9